

SITE PLAN
Scale A



LOCALITY PLAN
NTS

DREDGE AREA CO-ORDINATES

STATION	EASTING	NORTHING
1	491354.25	7154983.09
2	491362.67	7154978.28
3	491373.96	7154976.60
4	491539.77	7154837.47
5	491543.62	7154842.06
6	491377.82	7154981.19
7	491377.33	7154990.71
8	491372.55	7154997.87

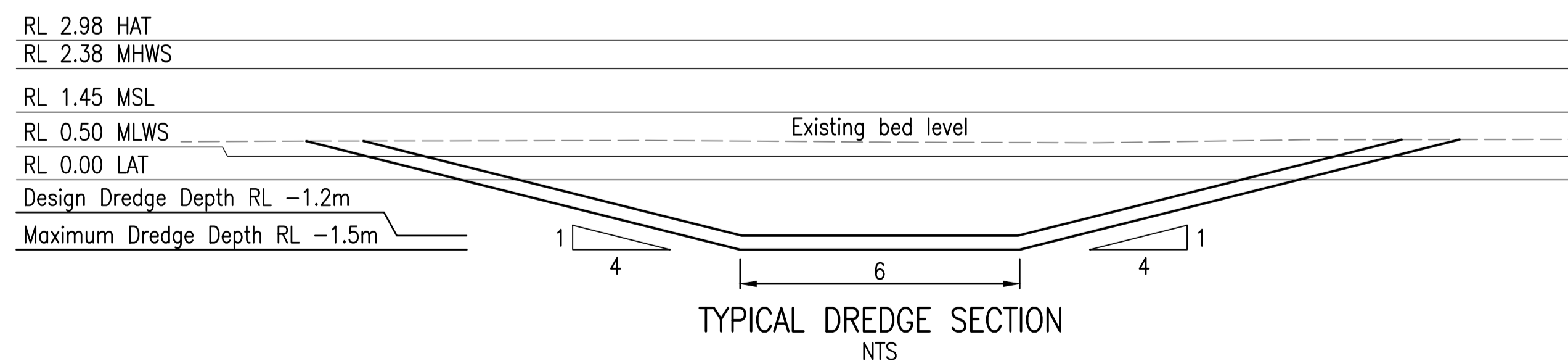
BEACH NOURISHMENT TOP CO-ORDINATES

STATION	EASTING	NORTHING
9	491374.16	7155070.34
10	491415.81	7155104.93
11	491430.81	7155117.04
12	491445.34	7155136.47
13	491460.45	7155154.03
14	491481.14	7155173.48
15	491495.31	7155183.69
16	491498.56	7155186.03
17	491508.41	7155193.34
18	491545.08	7155230.65
19	491558.13	7155256.52
20	491574.38	7155268.64

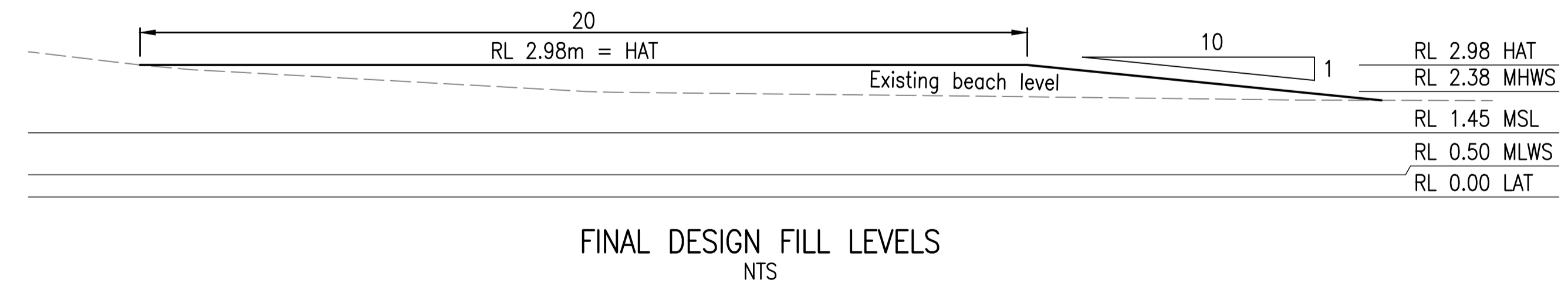
SURVEY CONTROL

Station	Easting	Northing	Elevation LAT
TBM001	491330.394	7155021.081	3.381
TBM002	491318.520	7155034.009	3.341
TBM003	491295.087	7155092.429	4.002
PM130522	491673.831	7155732.880	5.945
PM58852	492182.327	7156249.151	5.56
PM56183	490615.297	7155170.320	9.988
PM58841	490210.924	7155345.213	10.697
PM109973	495584.773	7151129.358	6.577

- NOTES**
- Volumes modelled from survey data taken from Hydrographic Services drawing number E550-083 compiled 02/09/2022.
 - Tidal planes are taken from MSQ Queensland Tide Tables 2025
Primary Port: Bundaberg (Burnett Heads)
Secondary Place: Great Sandy Strait – Snout Point

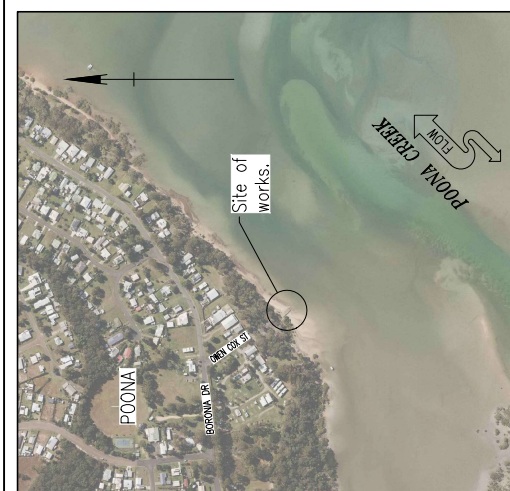


TYPICAL DREDGE SECTION
NTS

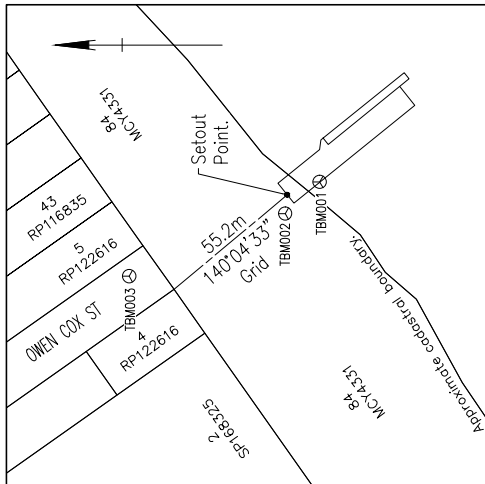


FINAL DESIGN FILL LEVELS
NTS

F	Associated Job Nos	Survey Data		Scales A 0 5 10 15 20m	POONA POONA CREEK BOAT RAMP (MB61) OWEN COX STREET	Drawn J.W.RICHARDS	SITE PLAN, LOCALITY PLAN, TABLES AND TYPICAL SECTIONS			
		Datum	GDA2020							
E		Horiz. Grid	MGA Z56	Dimensions shown in metres except where shown otherwise	CHANNEL DREDGING AND BEACH NOURISHMENT	Checked C.D.SORBELLO	ENGINEERING CERTIFICATION (RPEQ)			File No. 467/00065 Contract No. CN-23611
D		Height Origin	LAT				ENGINEERING AREA	SIGNATORY	NUMBER	
C		Survey Books				Designed T.CARMODY	CIVIL	DIGITALLY SIGNED BY KURT SUNDHOLM 16/12/2024	7632	Project No. TMR04-270 MRM_Detail (06/22)
B		Added annotation including volume quantities, contours & top of dredge batter on Site plan. Changed HAT to 2.98, added tidal planes to Sections, and survey data & tidal planes Notes.								
A	Issued For Construction									
	Revisions/Descriptions		Cert							



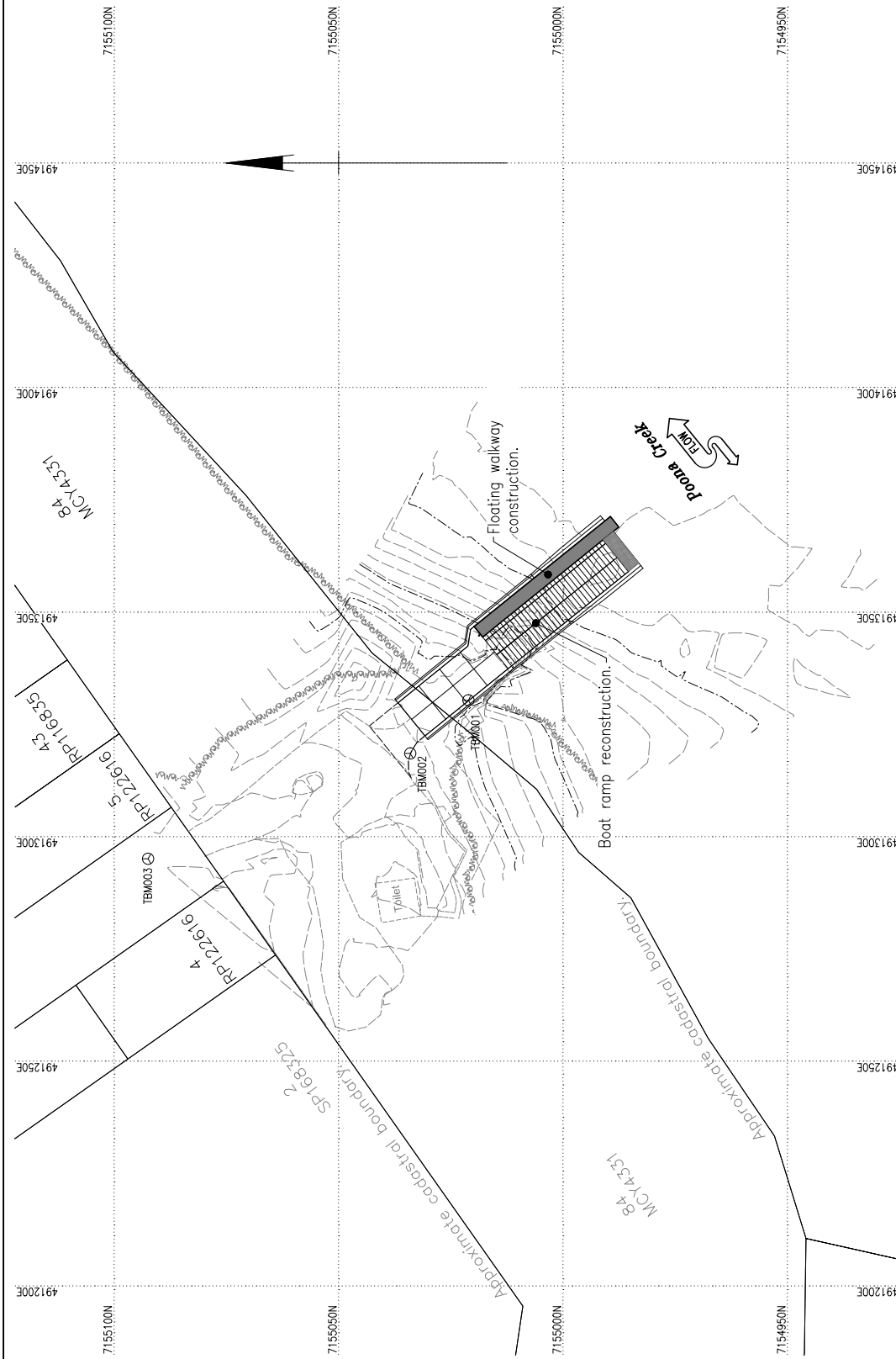
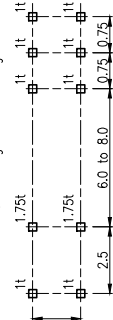
LOCALITY PLAN
NTS



CADASTRAL PLAN
Scale B

Station	Easting	Northing	Elevation AHD
TBM001	491330.394	7155021.081	2.091
TBM002	491318.520	7155034.009	2.051
TBM003	491295.087	7155092.429	2.712
PM130522	491673.831	7155732.880	4.655
PM58852	492182.327	7156248.151	4.270
PM58183	490615.297	7155170.320	8.698
PM58841	490210.924	7155345.213	9.407
PM109973	495584.773	7151129.368	5.287

7. The facility is designed for recreational boating use only based on the standard design wheel loading.



SITE PLAN
Scale A

NOTES

- All levels and contours are in metres and are reduced to Australian Height Datum (AHD). The contours shown represent existing surface levels.
- Survey information is derived from: Hydrographic Services plan E550-083 compiled using data from plan E550-082 19/07/2022.
- Horizontal datum GDA2020. Vertical datum based on LAT-AHD separation value of 1.29m.
- Cadastral boundaries shown are approximate and are not to be used for setout.
- The design does not consider applied construction loads. The Contractor is responsible for:
 - the method of construction
 - Maintenance of the work in a safe condition.
 - Ensuring construction loads are adequately resisted.
- The Contractor is responsible for unless otherwise noted:
 - Construction of pavements and kerbs.
 - Installation, relocation or removal of services, and ramp or car park furniture and components.

DRAWING INDEX

Number	Revision	Description
MB-15-3-1	A	SITE PLAN, LOCALITY PLAN AND CADASTRAL PLAN
MB-15-3-2	A	GENERAL ARRANGEMENT
SD4003	B	PRECAST PLANKS FOR BOAT RAMP TYPE RC4000 FRP
SD4004	A	PRECAST PLANKS FOR BOAT RAMP TYPE T4000 FRP
SD4030	A	BOAT RAMP CONSTRUCTION - GENERAL ARRANGEMENT AND EARTHWORKS
SD4031	A	BOAT RAMP CONSTRUCTION - SHOULDERS AND GROUTED MATTRESS
SD4033	A	BOAT RAMP CONSTRUCTION - CONCRETE SLAB AND JOINT DETAILS (GRP REINFORCED)
SD4034	A	BOAT RAMP CONSTRUCTION - INFORMATION SIGNS MATERIALS AND INSTALLATION

Issued For	Construction	Revisions/Descriptions	Cert	Date

Associated Job No.	Survey Data
	Datum: GDA2020 Horiz. Grid: MGA Z56 Height Origin: AHD Survey Books:

Scale	Dimensions shown in metres.
A 0 5 10 15 20m	
A 0 20 40m	

Drawn	J.M.RICHARDS
Checked	C.D.SORBELLO
Designed	T.CARMODY
Design Review	C.D.SORBELLO

ENGINEERING AREA	NUMBER
CIVIL	7632

ENGINEERING CERTIFICATION (REF)	CONTRACT NO.
SIGNATORY	CN-23611

PROJECT NO.	DRAWING NO.	FILE NO.
THR04-270	MB-15-3-1 A	467/00065

