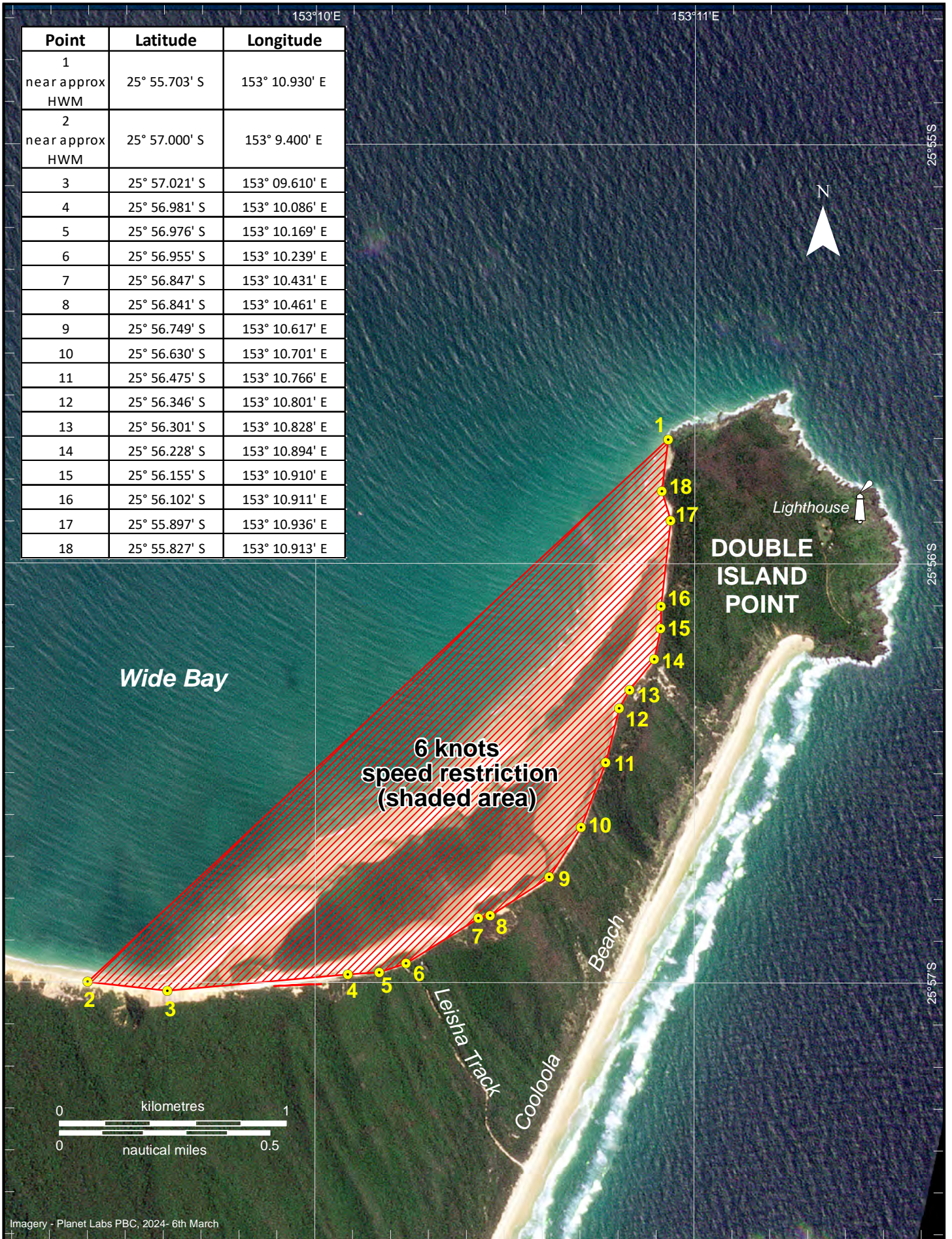


Point	Latitude	Longitude
1 near approx HWM	25° 55.703' S	153° 10.930' E
2 near approx HWM	25° 57.000' S	153° 9.400' E
3	25° 57.021' S	153° 09.610' E
4	25° 56.981' S	153° 10.086' E
5	25° 56.976' S	153° 10.169' E
6	25° 56.955' S	153° 10.239' E
7	25° 56.847' S	153° 10.431' E
8	25° 56.841' S	153° 10.461' E
9	25° 56.749' S	153° 10.617' E
10	25° 56.630' S	153° 10.701' E
11	25° 56.475' S	153° 10.766' E
12	25° 56.346' S	153° 10.801' E
13	25° 56.301' S	153° 10.828' E
14	25° 56.228' S	153° 10.894' E
15	25° 56.155' S	153° 10.910' E
16	25° 56.102' S	153° 10.911' E
17	25° 55.897' S	153° 10.936' E
18	25° 55.827' S	153° 10.913' E



Imagery - Planet Labs PBC, 2024- 6th March

Map: S8sp-112-1

Horizontal datum: GDA2020
 Projection: UTM (Zone 56)
 Prepared 26 April 2024
 Maritime Safety Queensland
 Port Operations and VTS - Spatial Services

Speed restriction for all vessels under the
Transport Operations (Marine Safety) Regulation 2004

DOUBLE ISLAND POINT - WIDE BAY
Six knots speed restriction (all vessels)

© The State of Queensland 2024
 Transport and Main Roads



Queensland
 Government