



ARRIVAL PASSAGE PLAN - HAY POINT / DALRYMPLE BAY

Qships ID: _____

PILOT: _____

DATE: _____

VESSEL: _____

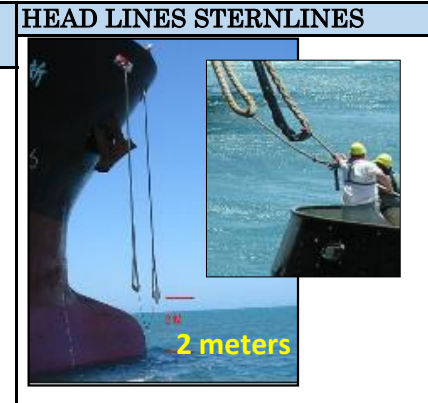
BERTH: _____ from _____

TUGS	Pos	MF	LG

BP 65 t (Baladha, Bulgu, Kalarka, Kolijo, Karloo, PB Fitzroy)
 BP 57 t (PB Gibson, Mt Florance); BP 50 t (Botany, Hunter)
 SWL of Bitts:
 SWL of Fairleads:

TUG ARRANGEMENT AND MOORING PLAN

HI SI Brg



DRAFTS	Pred	Effective	UKC @
FWD:			Datum
AFT:			Tide
MAX:			Residuals
TRIM:			Water =
Eff UKC			Max Draft
			UKC =

***Heaving line required by ships crew to retrieve tugs messenger**

撤纜 (Piēr lǎn)

Place tugs line eye on **inside bitt post** away from fairlead

Two Lines JOINED TOGETHER
 Lines lowered 2m above water

TIDE	Time	Hgt	Rate

SPRINGS / (BREASTS)

2 round turns and a bowline

H/L Water	Time	Height

MOORING SAFETY LIGHTS

RED - keep lines slack
GREEN - pick up slack as required

Send **Heaving Line** ashore to retrieve **SHORE MESSENGER**
 Tie Messenger to mooring line eyes

CHECKS

Pilot card / particulars received ?	Y / N
Bridge Equipment tested ok ?	Y / N
Main Engine tested ahead and astern ?	Y / N
Main Engine in Full Manoeuvring ?	Y / N
Main Engine In Bridge Control ?	Y / N
Ballast - Berthing displacement =	Y/N
Right Handed Fixed Pitch Propeller ?	Y / N
Two steering motors operational?	Y / N
Anchors on emergency standby. Brakes and Bars ?	Y / N
Contingency and abort plans discussed ?	Y / N

PILOT CALLS

Ch 16 - All Ships Call
 Ch 08 / 12 - Tugs and Terminal
 Ch10 - VTS POB, 1st Line @ all fast

SHORE GANGWAY

Shore Access is Supplied

TIMES

Pilot on Board	
1st Line	
Pilot Away	
Delay	

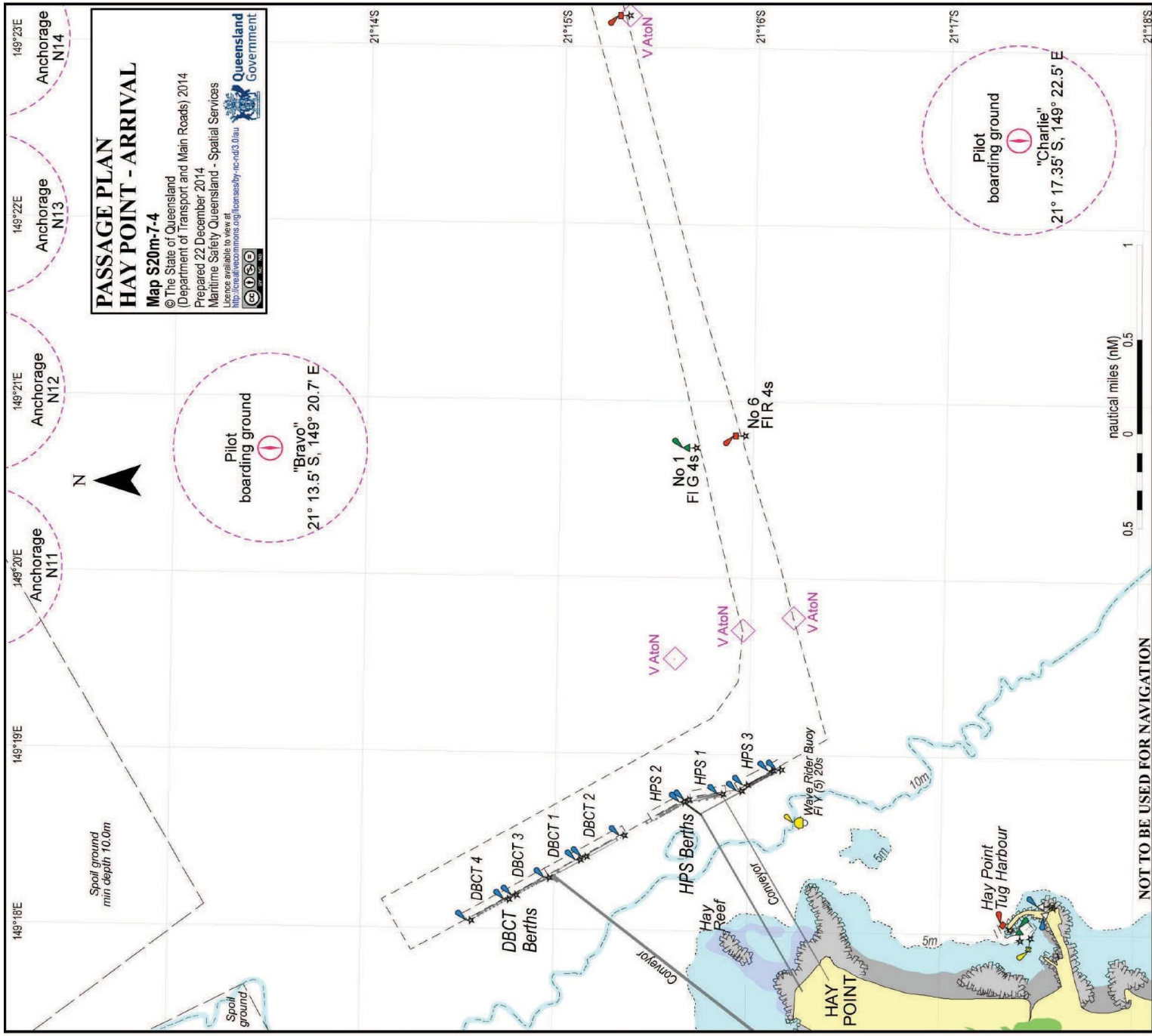
PASSAGE PLAN AGREED

Signature of Master	Signature of Pilot

Pilotage charge requested at _____

ENGINE/SPD - CR REVS			

NOTES



**PASSAGE PLAN
HAY POINT - ARRIVAL**

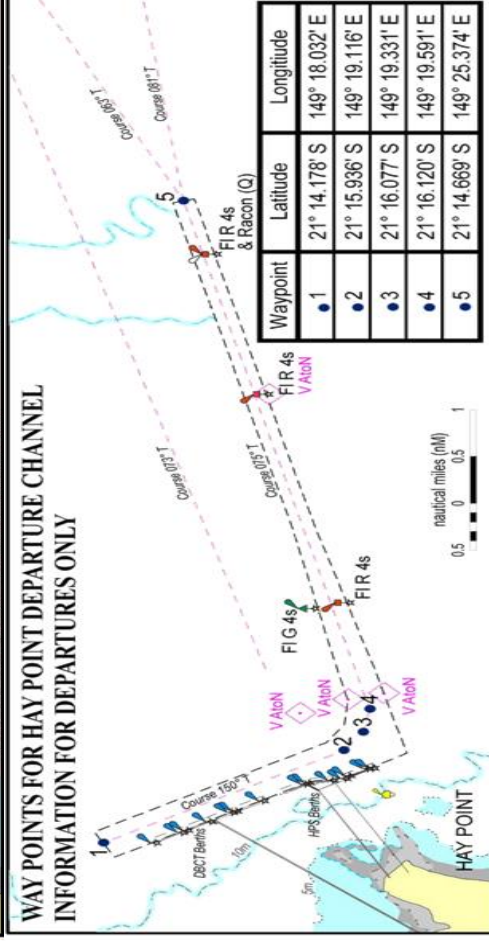
Map S20m-7-4

© The State of Queensland
(Department of Transport and Main Roads) 2014
Prepared 22 December 2014
Maritime Safety Queensland - Spatial Services

License available to view at
<http://www.marine.gov.au/licenses/by-nc-nd/3.0/au>



NOT TO BE USED FOR NAVIGATION
WAY POINTS FOR HAY POINT DEPARTURE CHANNEL
INFORMATION FOR DEPARTURES ONLY



Waypoint	Latitude	Longitude
1	21° 14.178' S	149° 18.032' E
2	21° 15.936' S	149° 19.116' E
3	21° 16.077' S	149° 19.331' E
4	21° 16.120' S	149° 19.591' E
5	21° 14.869' S	149° 25.374' E

REMINDEES FOR DEPARTURE

1. TEST ENGINE after completion loading.
Request permission from Terminal.
Advise VTS (VHF10) on completion.
2. INSERT WAYPOINTS in Navigation Systems for Departure
3. HELICOPTER HATCH to be washed after loading

