

ARRIVAL PASSAGE PLAN - HAY POINT / DALRYMPLE BAY

Qships ID:

PILOT: _____

DATE: _____

VESSEL: _____

BERTH: _____ from _____

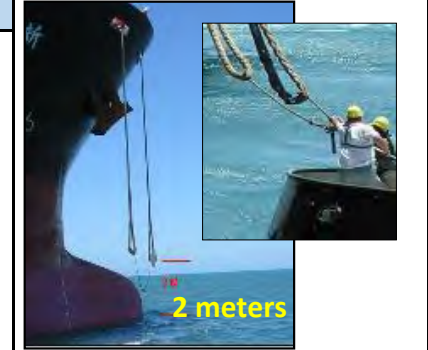
TUGS	Pos	MF	LG

TUG ARRANGEMENT AND MOORING PLAN

HI SI Brg

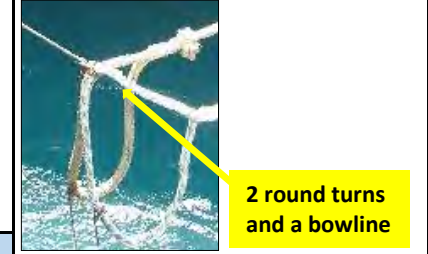
BP 65 t (Baladha, Bulgu, Kalarka, Kolijo, Karloo, PB Fitzroy)
 BP 57 t (PB Gibson, Mt Florance); BP 50 t (Botany, Hunter)
 SWL of Bitts:
 SWL of Fairleads:

HEAD LINES STERNLINES



Two Lines JOINED TOGETHER
 Lines lowered 2m above water

SPRINGS / (BREASTS)

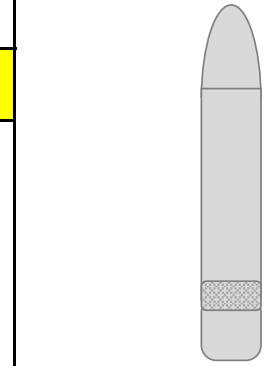


DRAFTS	Pred	Effective	UKC @
FWD:			Datum
AFT:			Tide
MAX:			Residuals
TRIM:			Water =
Eff UKC			Max Draft
			UKC =

***Heaving line required by ships crew to retrieve tugs messenger**

撇纜 (Piēr lǎn)

Place tugs line eye on **inside bitt post** away from fairlead



TIDE	Time	Hgt	Rate

H/L Water	Time	Height

CHECKS

Pilot card / particulars received ?	Y / N
Bridge Equipment tested ok ?	Y / N
Main Engine tested ahead and astern ?	Y / N
Main Engine in Full Manoeuvring ?	Y / N
Main Engine In Bridge Control ?	Y / N
Ballast - Berthing displacement =	Y/N
Right Handed Fixed Pitch Propeller ?	Y / N
Two steering motors operational?	Y / N
Anchors on emergency standby. Brakes and Bars ?	Y / N
Contingency and abort plans discussed ?	Y / N

MOORING SAFETY LIGHTS

RED - keep lines slack
GREEN - pick up slack as required

PILOT CALLS

Ch 16 - All Ships Call
 Ch 08 / 12 - Tugs and Terminal
 Ch10 - VTS POB, 1st Line @ all fast

TIMES

Pilot on Board	
1st Line	
Pilot Away	
Delay	

Send **Heaving Line** ashore to retrieve **SHORE MESSENGER**
 Tie Messenger to mooring line eyes

SHORE GANGWAY

Shore Access is Supplied

PASSAGE PLAN AGREED

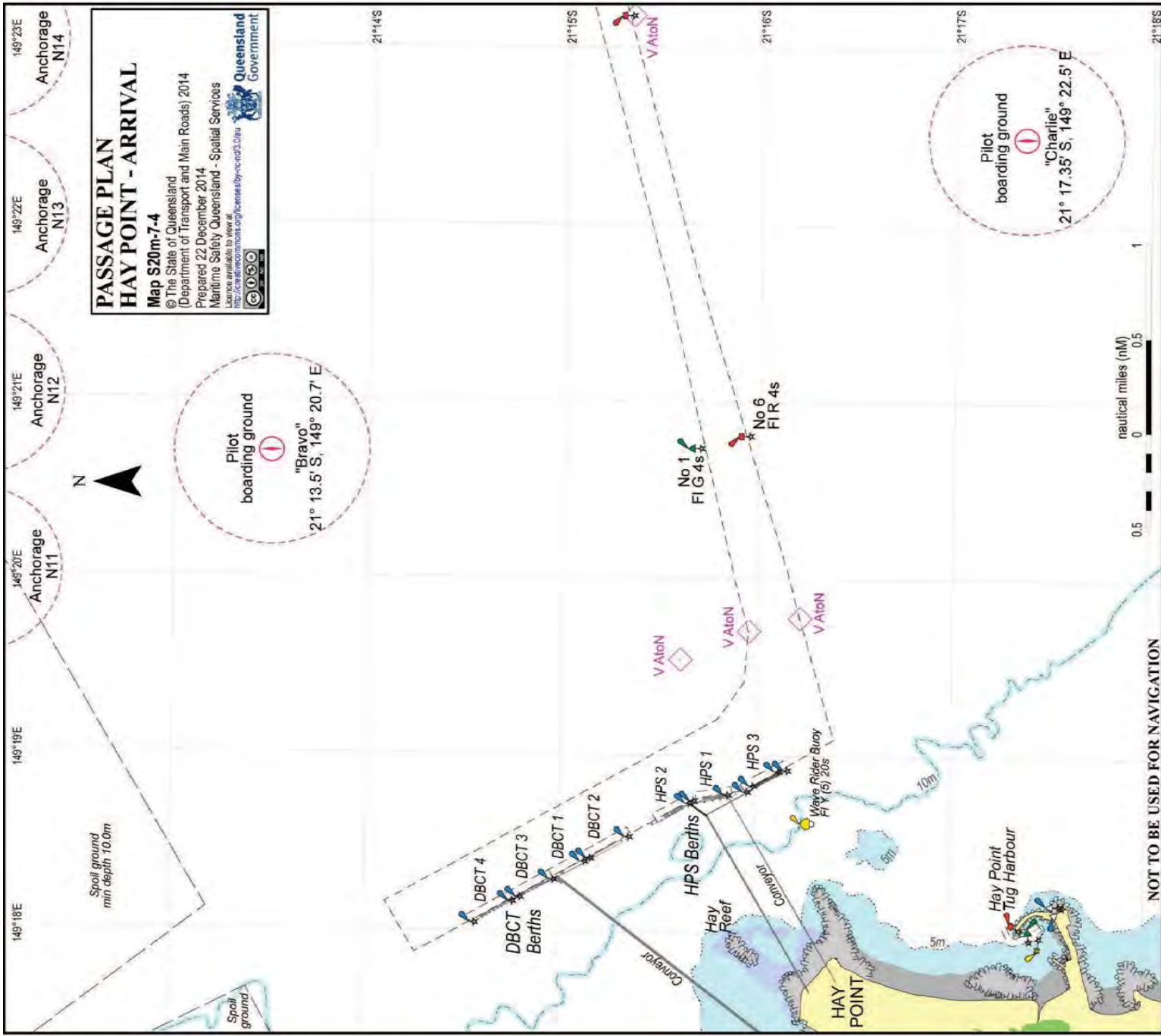
Signature of Master	Signature of Pilot

Pilotage charge requested at _____

ENGINE/SPD - CR REVS

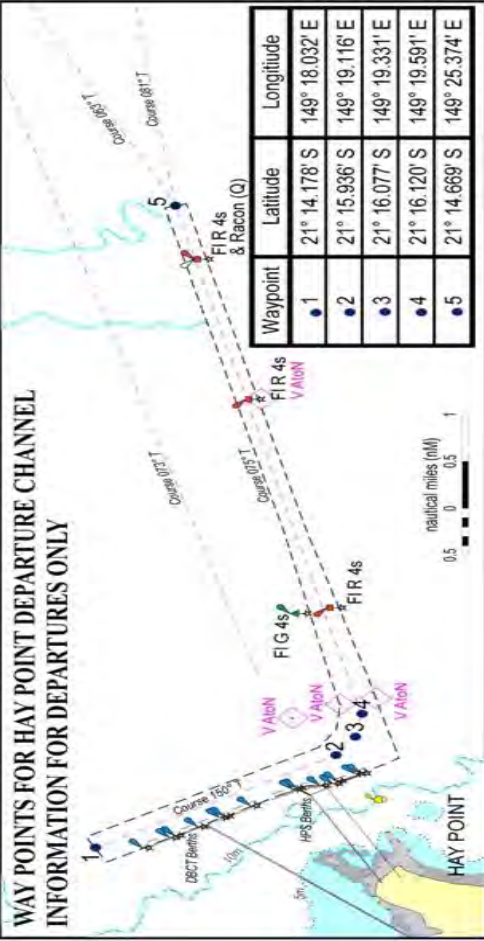
--	--	--	--

NOTES



**PASSAGE PLAN
HAY POINT - ARRIVAL**
 Map S20m-7-4
 © The State of Queensland
 (Department of Transport and Main Roads) 2014
 Prepared 22 December 2014
 Maritime Safety Queensland - Spatial Services
 Licence available to view at
<http://www.marine.com.au/licenses-by-royal-order>
 Queensland Government

NOT TO BE USED FOR NAVIGATION



WAYPOINTS FOR HAY POINT DEPARTURE CHANNEL
 INFORMATION FOR DEPARTURES ONLY

Waypoint	Latitude	Longitude
1	21° 14.178' S	149° 18.032' E
2	21° 15.936' S	149° 19.116' E
3	21° 16.077' S	149° 19.331' E
4	21° 16.120' S	149° 19.591' E
5	21° 14.669' S	149° 25.374' E

REMEMBERS FOR DEPARTURE

1. TEST ENGINE 1 HOUR BEFORE LAST LINE!
Request Permission to HP VTS on Ch. 10
2. INSERT WAYPOINTS in Navigation Systems for Departure
3. HELICOPTER HATCH to be washed after loading

