

Maritime Safety Queensland



Round Hill Creek

Beacon to Beacon Guide

Discovery Coast

Published by

Maritime Safety Queensland

© Copyright The State of Queensland
(Department of Transport and Main Roads) 2020



To view a copy of this licence, visit
<https://creativecommons.org/licenses/by/4.0/>

For commercial use terms and conditions

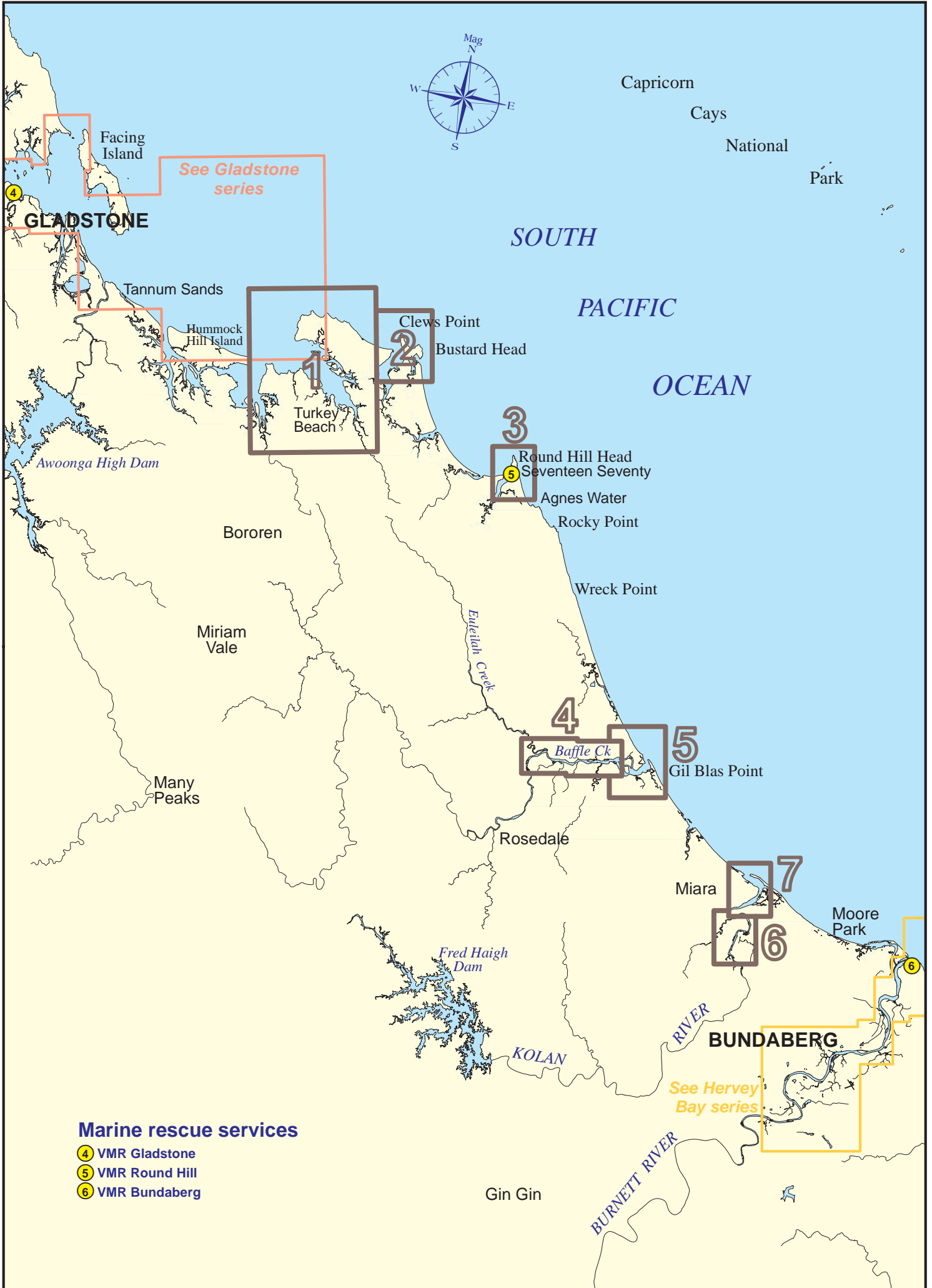
Please visit the Maritime Safety Queensland website at www.msq.qld.gov.au

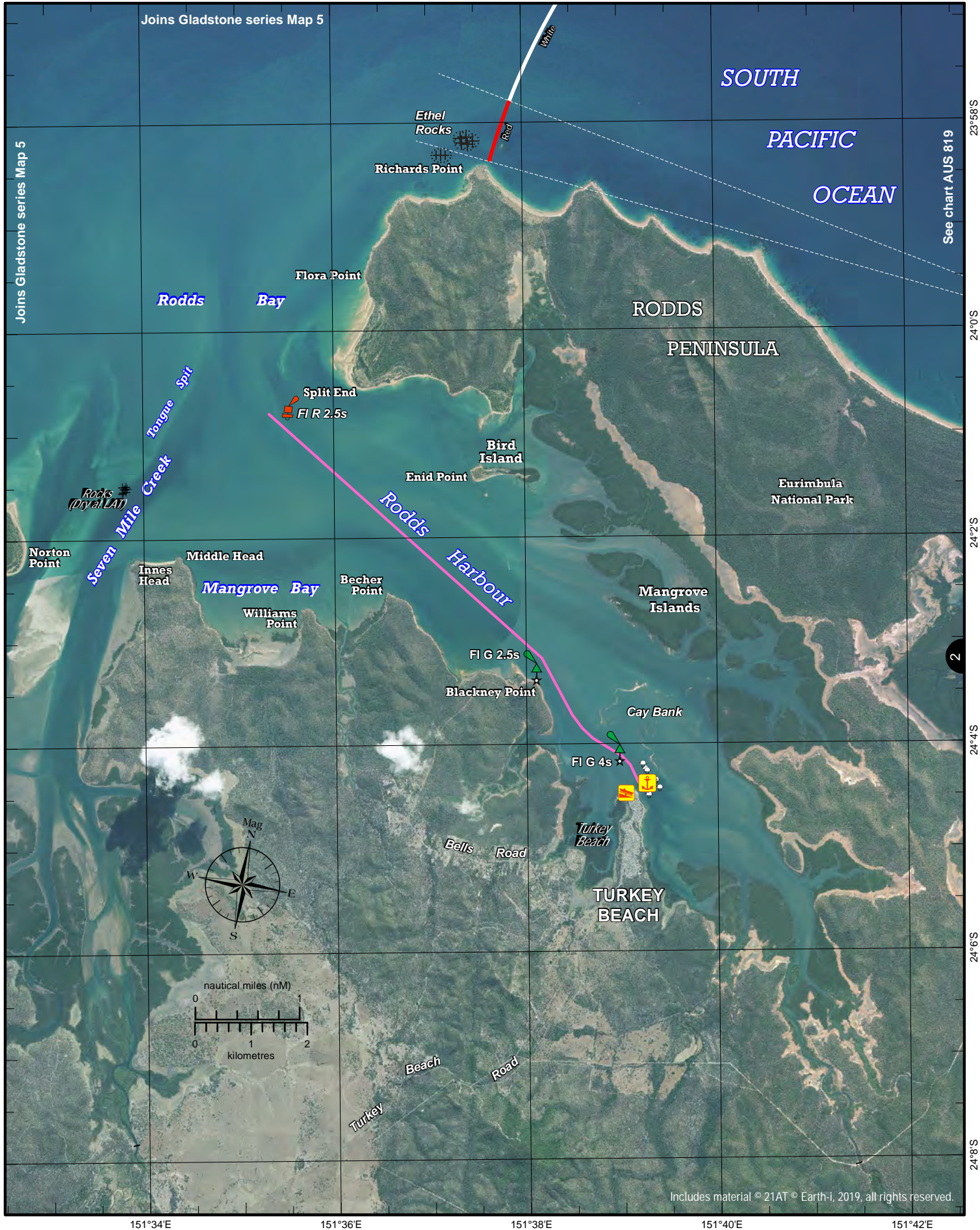
'How to' use this guide

Use this Beacon to Beacon Guide with the 'How to' and legend booklet available from www.msq.qld.gov.au



Queensland
Government





Always keep a proper lookout when boating. Exercise care at all times.
 Look up and live for power and cable crossings that may not be shown on these maps due to scale or recent construction.

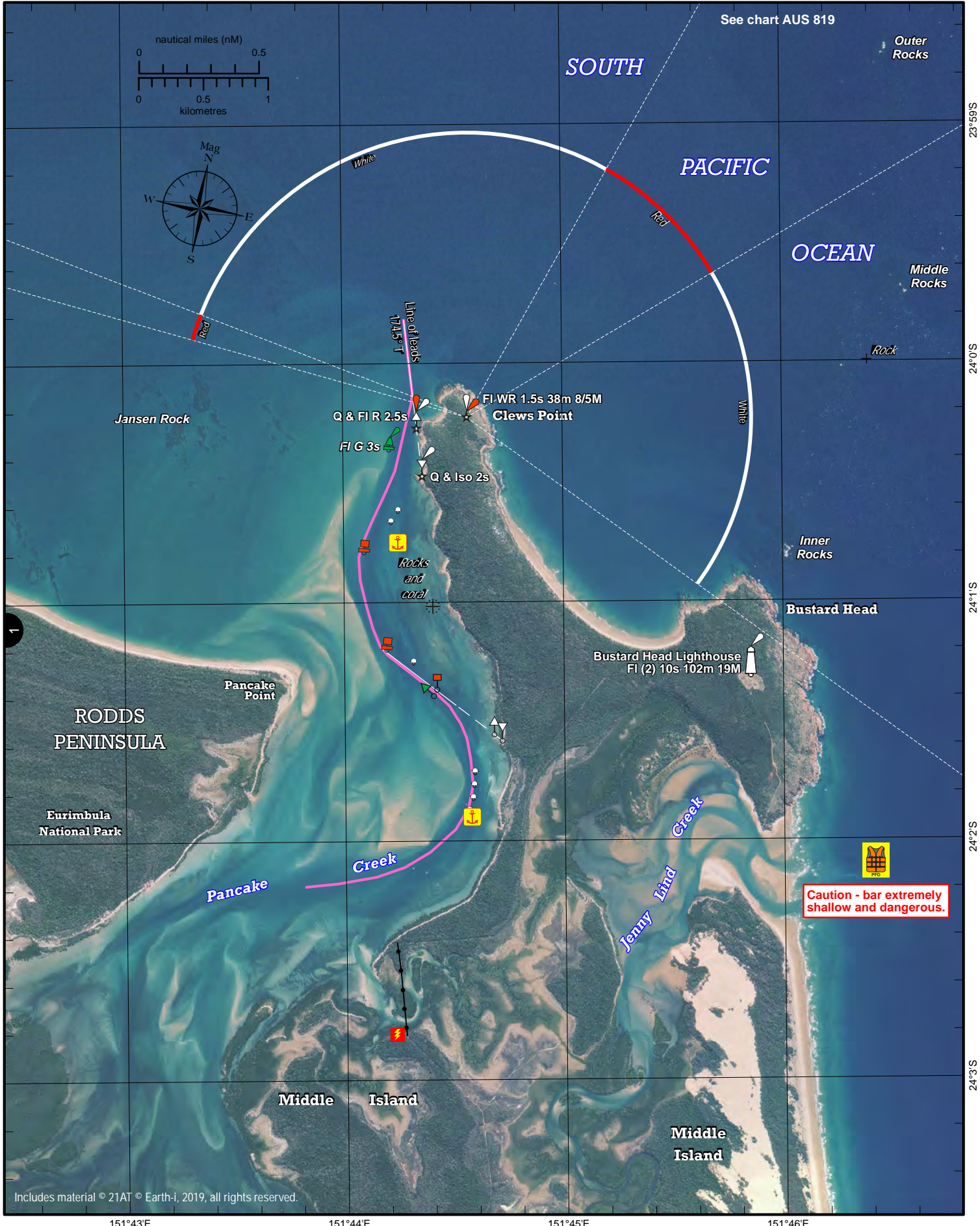
CAUTION: Soundings and contours are not available for these waters. The latest satellite imagery (captured during 2018) available for this area is shown only as a guide. Sandbank visibility depends on the height of tide at time of image capture.

© Copyright The State of Queensland 2020
 Queensland Department of Transport and Main Roads - Maritime Safety Queensland.
 To reproduce any map within this series, see terms and conditions at Maritime Safety Queensland's website (www.msq.qld.gov.au)

Nautical information current to 6 February 2020

Includes material © 21AT © Earth-i, 2019, all rights reserved.





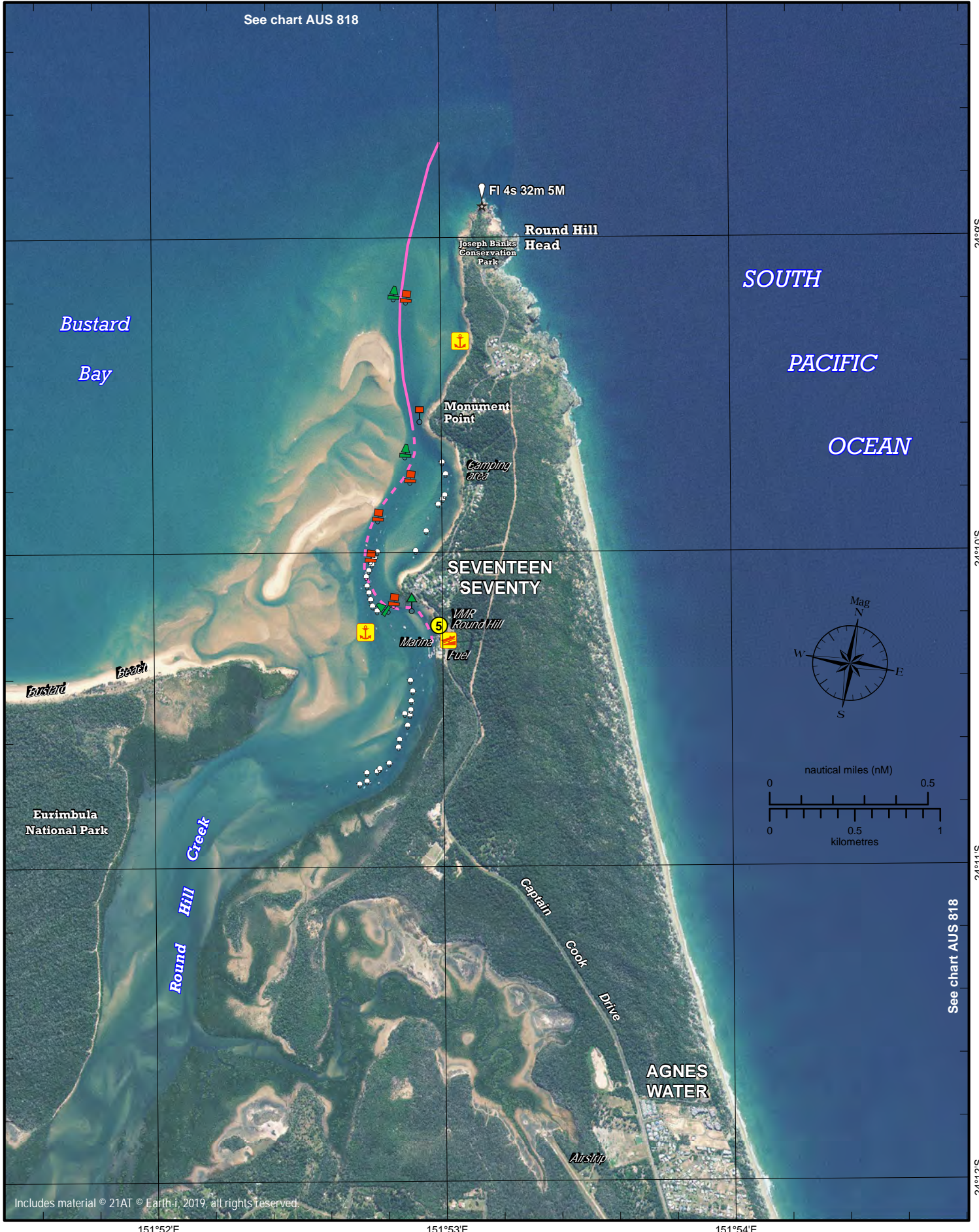
Always keep a proper lookout when boating. Exercise care at all times.
 Look up and live for power and cable crossings that may not be shown on these maps due to scale or recent construction.

Nautical information current to 6 February 2020

CAUTION: Soundings and contours are not available for these waters. The latest satellite imagery (captured during 2018) available for this area is shown only as a guide. Sandbank visibility depends on the height of tide at time of image capture.

© Copyright The State of Queensland 2020
 Queensland Department of Transport and Main Roads - Maritime Safety Queensland.
 To reproduce any map within this series, see terms and conditions at Maritime Safety Queensland's website (www.msq.qld.gov.au)





Includes material © 21AT © Earth-i, 2019, all rights reserved.

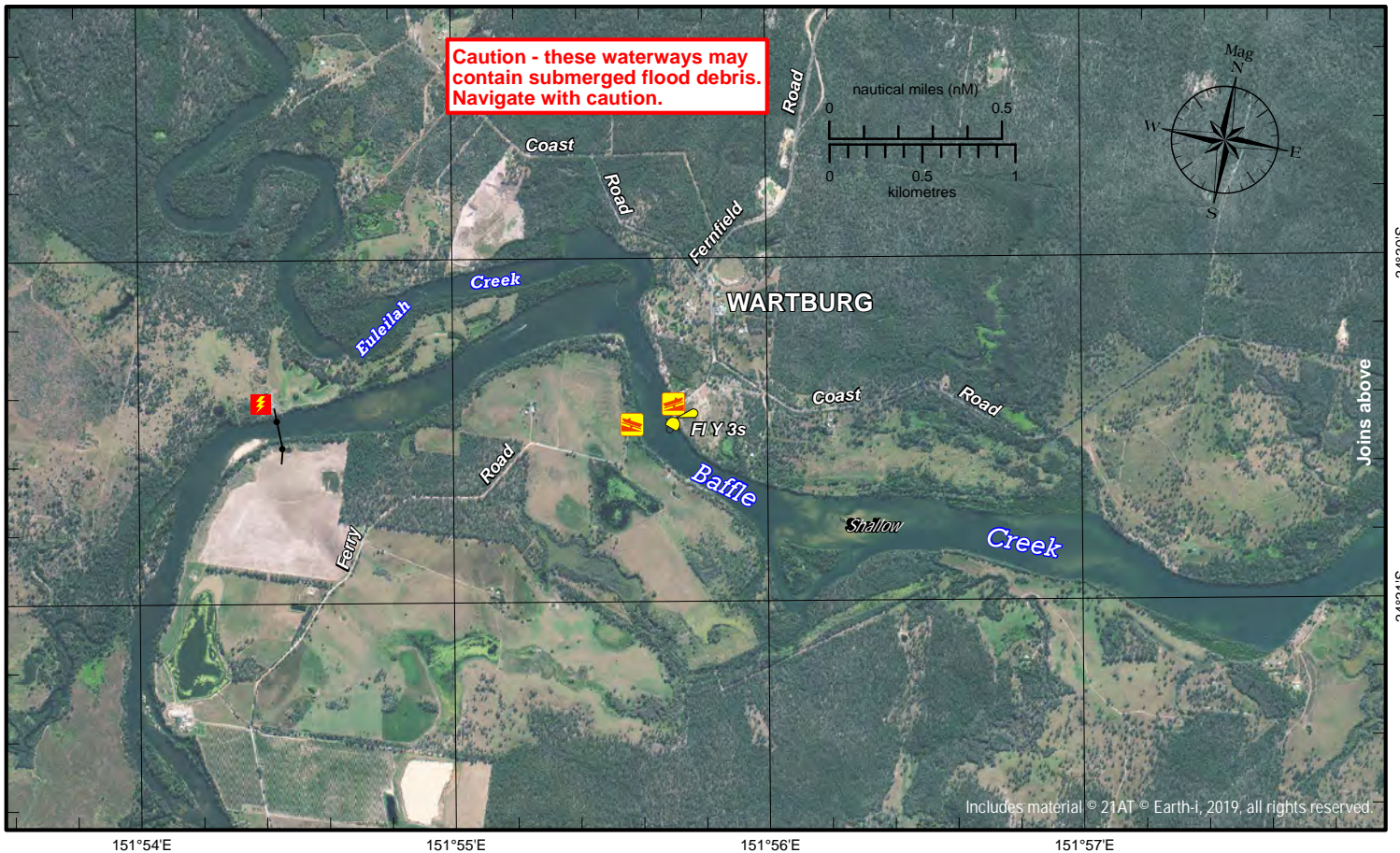
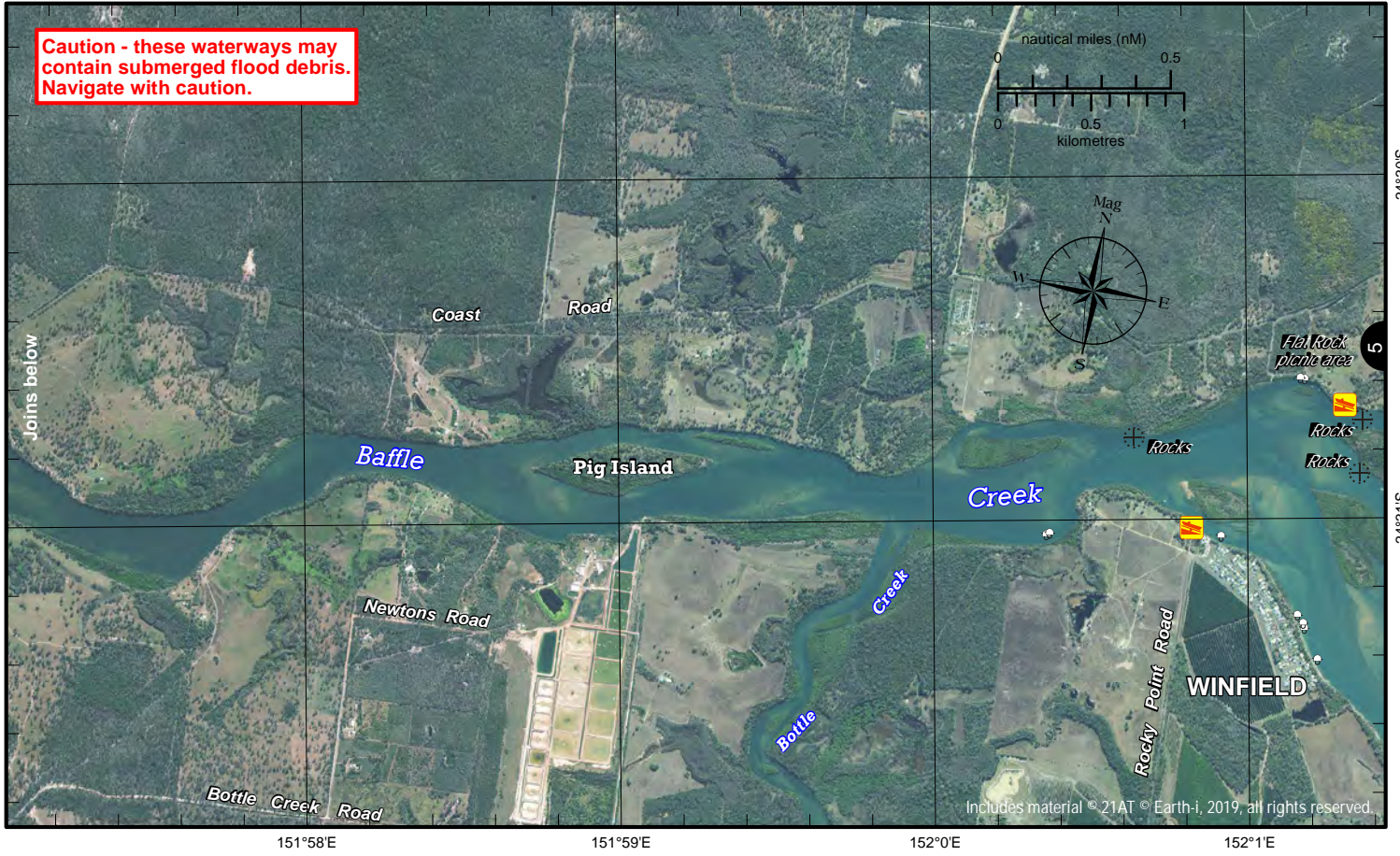
Always keep a proper lookout when boating. Exercise care at all times.
Look up and live for power and cable crossings that may not be shown on these maps due to scale or recent construction.

Nautical information current to 9 December 2020

CAUTION: Soundings and contours are not available for these waters. The latest satellite imagery (captured during 2018) available for this area is shown only as a guide. Sandbank visibility depends on the height of tide at time of image capture.

© Copyright The State of Queensland 2020
Queensland Department of Transport and Main Roads - Maritime Safety Queensland.
To reproduce any map within this series, see terms and conditions at Maritime Safety Queensland's website (www.msq.qld.gov.au)





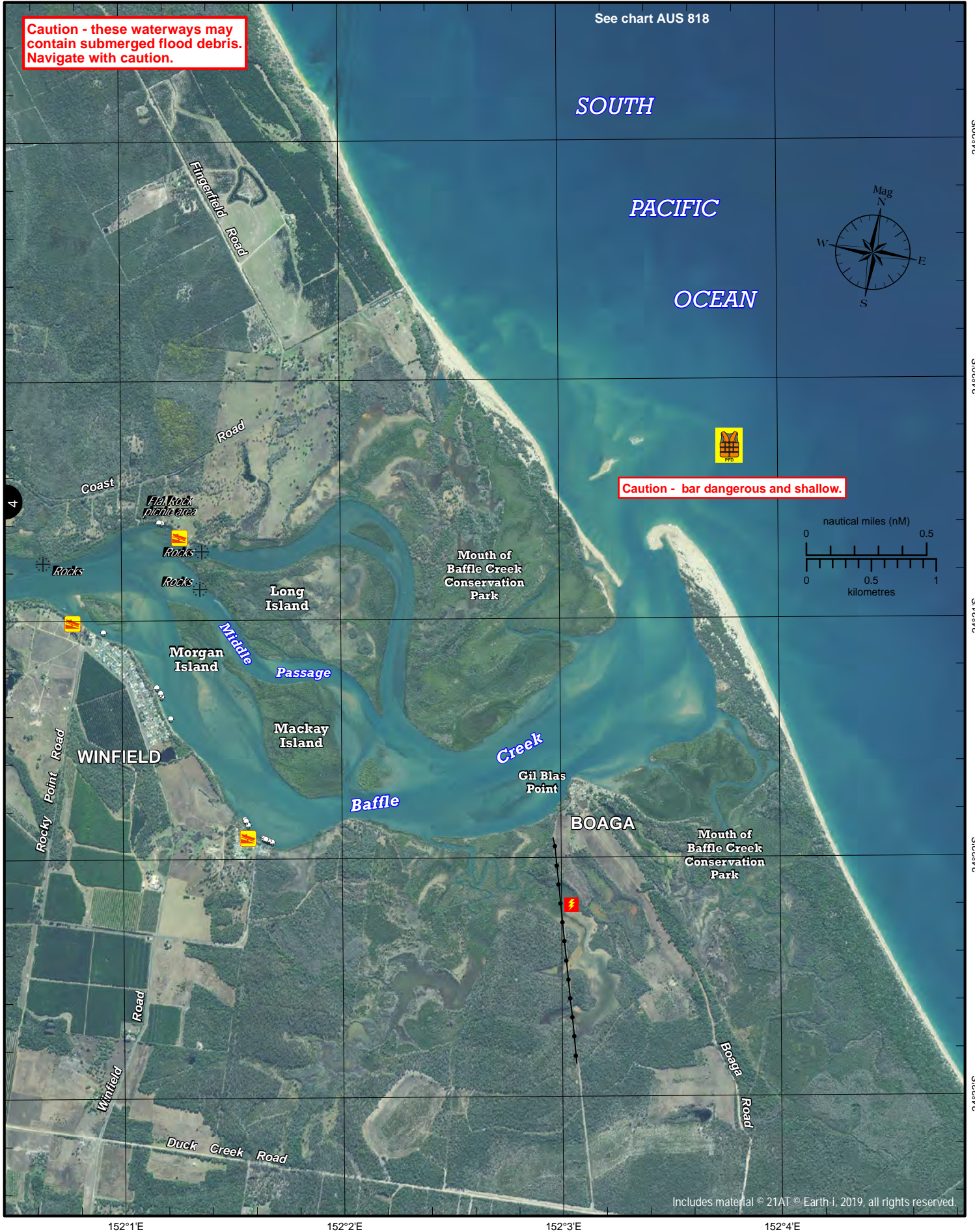
Always keep a proper lookout when boating. Exercise care at all times.
 Look up and live for power and cable crossings that may not be shown on these maps due to scale or recent construction.

Nautical information current to 6 February 2020

CAUTION: Soundings and contours are not available for these waters. The latest satellite imagery (captured during 2018) available for this area is shown only as a guide. Sandbank visibility depends on the height of tide at time of image capture.

© Copyright The State of Queensland 2020
 Queensland Department of Transport and Main Roads - Maritime Safety Queensland.
 To reproduce any map within this series, see terms and conditions at Maritime Safety Queensland's website (www.msq.qld.gov.au)







Always keep a proper lookout when boating. Exercise care at all times.
Look up and live for power and cable crossings that may not be shown on these maps due to scale or recent construction.

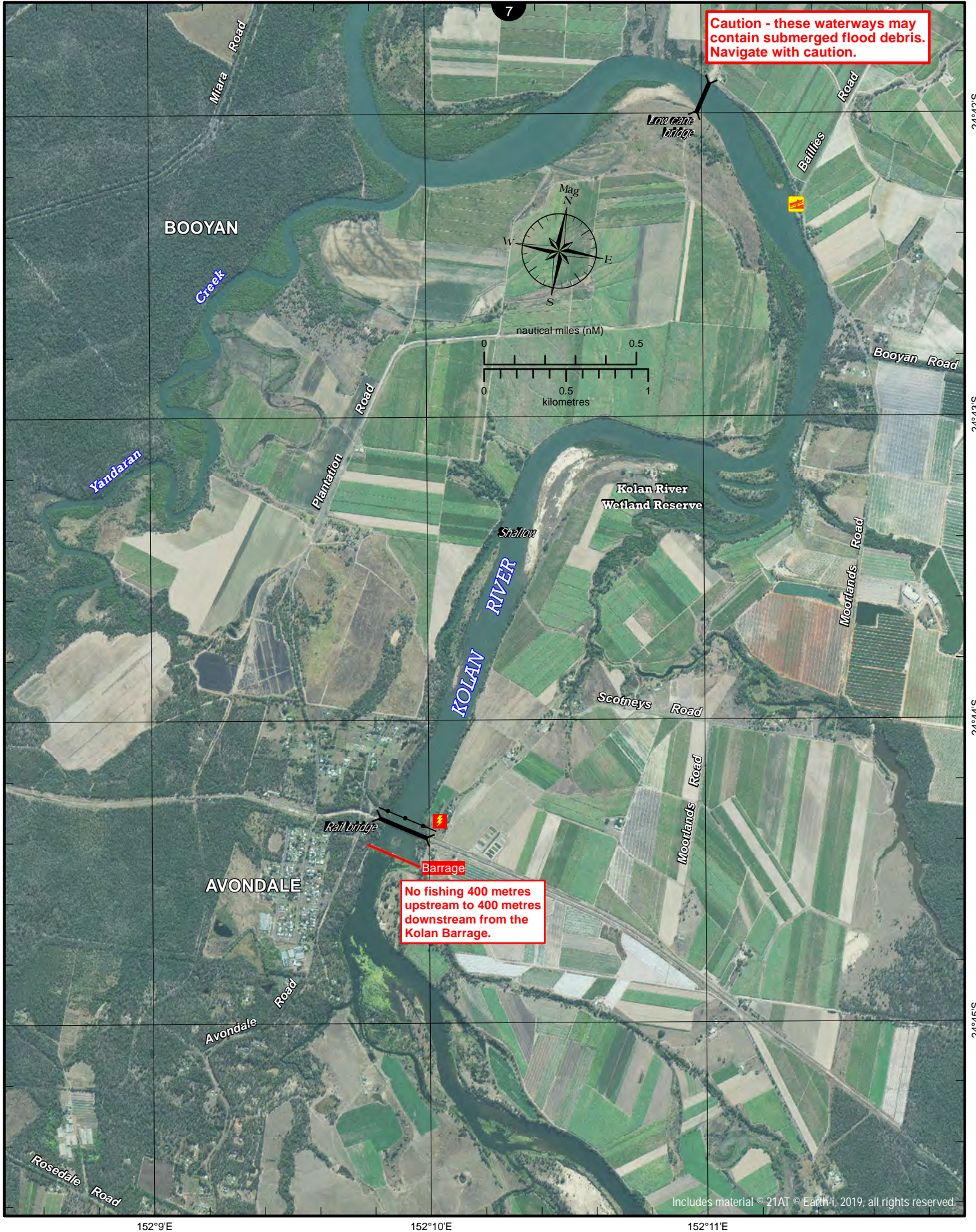
CAUTION: Soundings and contours are not available for these waters. The latest satellite imagery (captured during 2018) available for this area is shown only as a guide. Sandbank visibility depends on the height of tide at time of image capture.

© Copyright The State of Queensland 2020
Queensland Department of Transport and Main Roads - Maritime Safety Queensland.
To reproduce any map within this series, see terms and conditions at Maritime Safety Queensland's website (www.msq.qld.gov.au)

Nautical information current to 6 February 2020







Always keep a proper lookout when boating. Exercise care at all times.
Look up and live for power and cable crossings that may not be shown on these maps due to scale or recent construction.

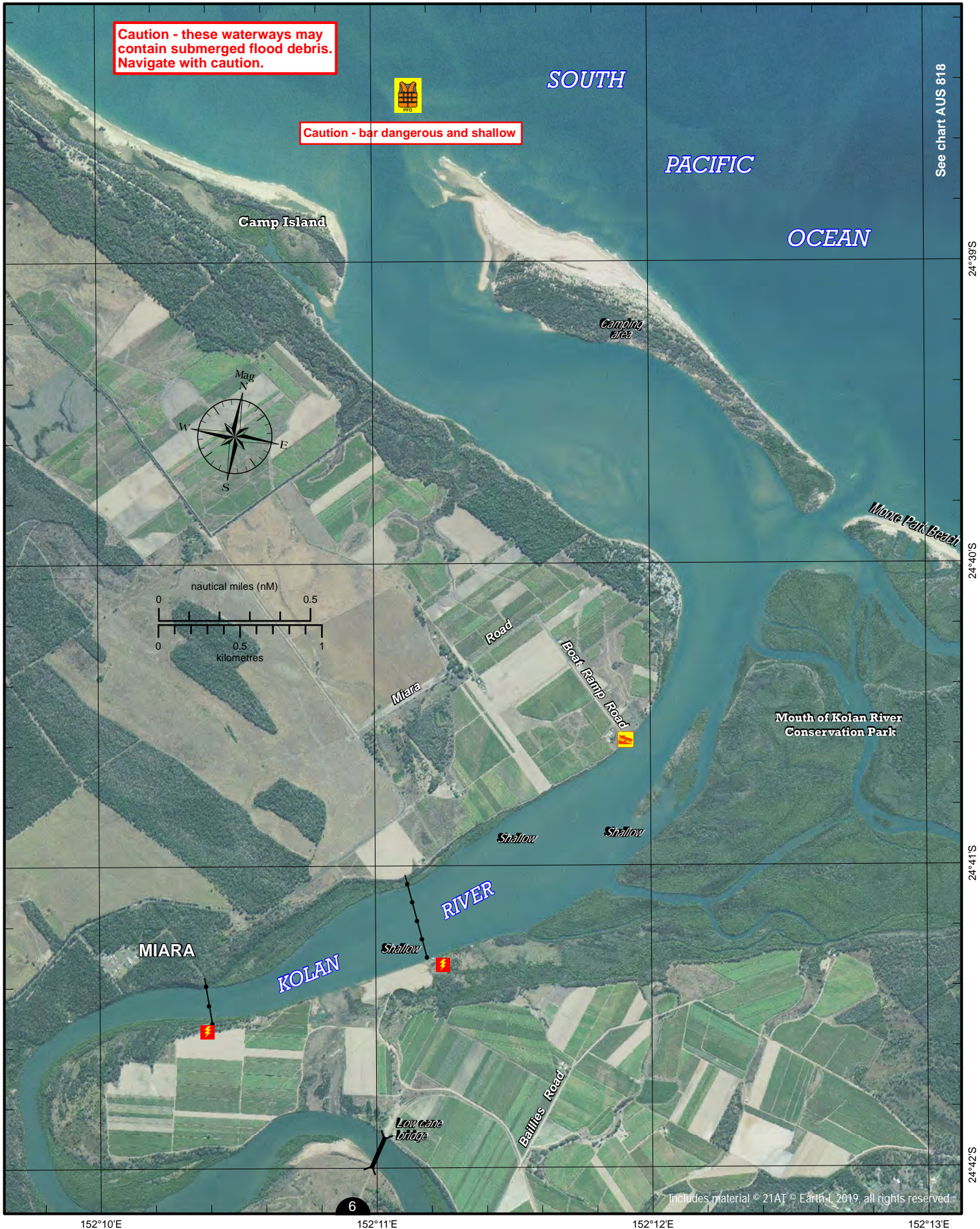
CAUTION: Soundings and contours are not available for these waters. The latest satellite imagery (captured during 2018) available for this area is shown only as a guide. Sandbank visibility depends on the height of tide at time of image capture.

© Copyright The State of Queensland 2020
 Queensland Department of Transport and Main Roads - Maritime Safety Queensland.
 To reproduce any map within this series, see terms and conditions at Maritime Safety Queensland's website (www.msq.qld.gov.au)

Nautical information current to 6 February 2020

Includes material © 21AT © Earth-i, 2019, all rights reserved.





See chart AUS 818

24°39'S
24°40'S
24°41'S
24°42'S

152°10'E 152°11'E 152°12'E 152°13'E

Always keep a proper lookout when boating. Exercise care at all times.
Look up and live for power and cable crossings that may not be shown on these maps due to scale or recent construction.

Nautical information current to 6 February 2020

CAUTION: Soundings and contours are not available for these waters. The latest satellite imagery (captured during 2018) available for this area is shown only as a guide. Sandbank visibility depends on the height of tide at time of image capture.



© Copyright The State of Queensland 2020
Queensland Department of Transport and Main Roads - Maritime Safety Queensland.
To reproduce any map within this series, see terms and conditions at Maritime Safety Queensland's website (www.msq.qld.gov.au)

