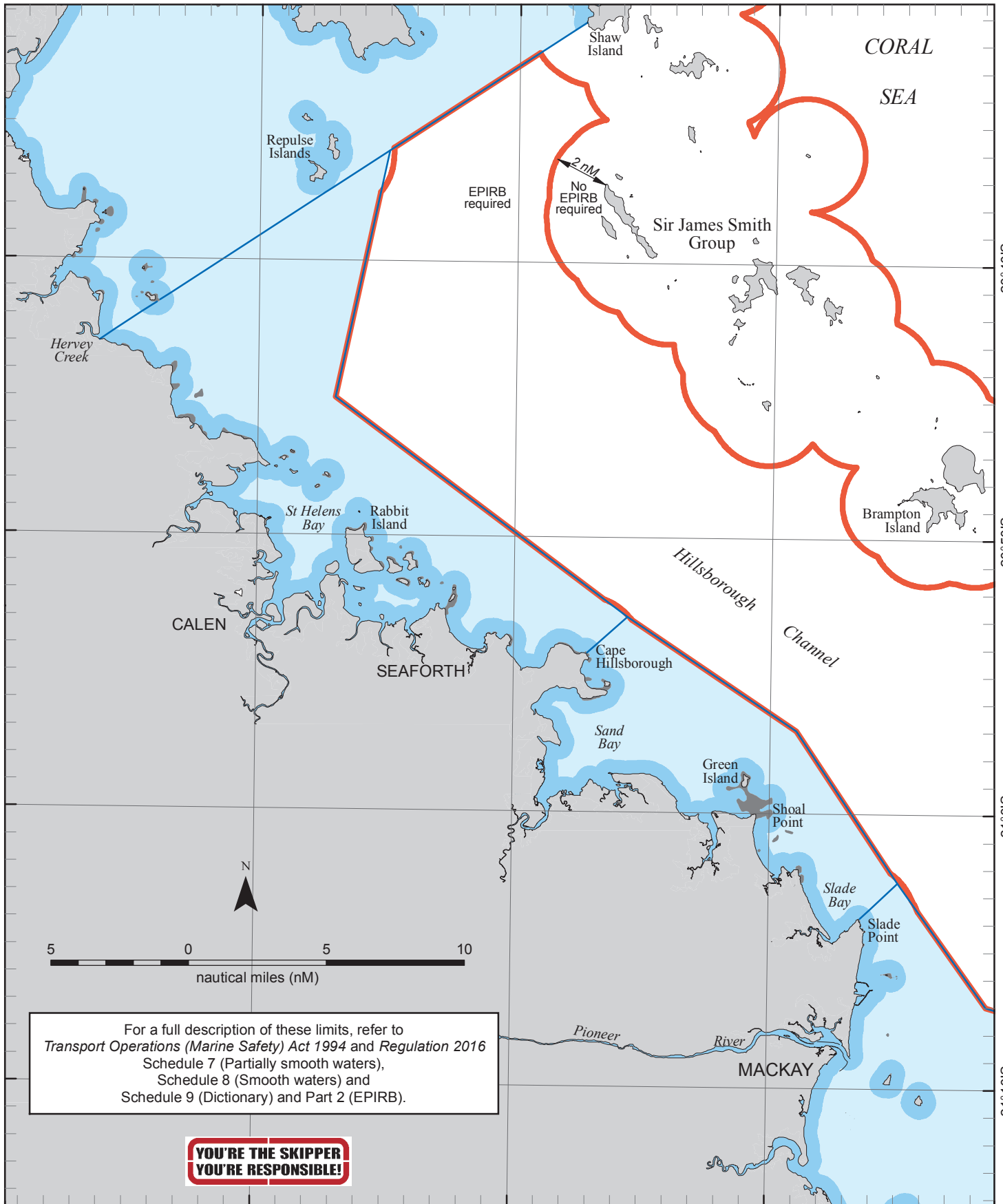


148°50'E

149°0'E

149°10'E



20°40'S
20°50'S
21°0'S
21°10'S

For a full description of these limits, refer to
Transport Operations (Marine Safety) Act 1994 and Regulation 2016
 Schedule 7 (Partially smooth waters),
 Schedule 8 (Smooth waters) and
 Schedule 9 (Dictionary) and Part 2 (EPIRB).


**YOU'RE THE SKIPPER
 YOU'RE RESPONSIBLE!**


"Smooth waters" (as described in Schedule 9) means the waters-


- of rivers, creeks, streams and lakes; or
- within breakwaters or revetments; or
- described in Schedule 7 that are within 0.5 nautical mile from land; or
- described in Schedule 8.

"Partially smooth waters" means the waters-

- described in Schedule 7, other than waters within 0.5 nautical mile from land.

 Partially smooth waters

 Smooth waters

 The EPIRB 2 nautical mile limit may not be shown for every island due to scale but still applies to any land above highest water mark.

Map S8sw-8-4

Horizontal datum: GDA94
Projection: UTM (Zone 55)

Prepared 25 July 2016
Spatial Services
Maritime Safety Queensland

SAND BAY and ST HELENS BAY
Partially smooth and smooth waters

© The State of Queensland
(Department of Transport and Main Roads) 2016

To view a copy of the licence, visit
<http://creativecommons.org/licenses/by/3.0/au>

