

Smooth and partially smooth water limit maps

Because the conditions experienced on Queensland's waterways are so diverse, designated water limit areas have been established. These affect the types of regulated safety equipment required to be carried on board.

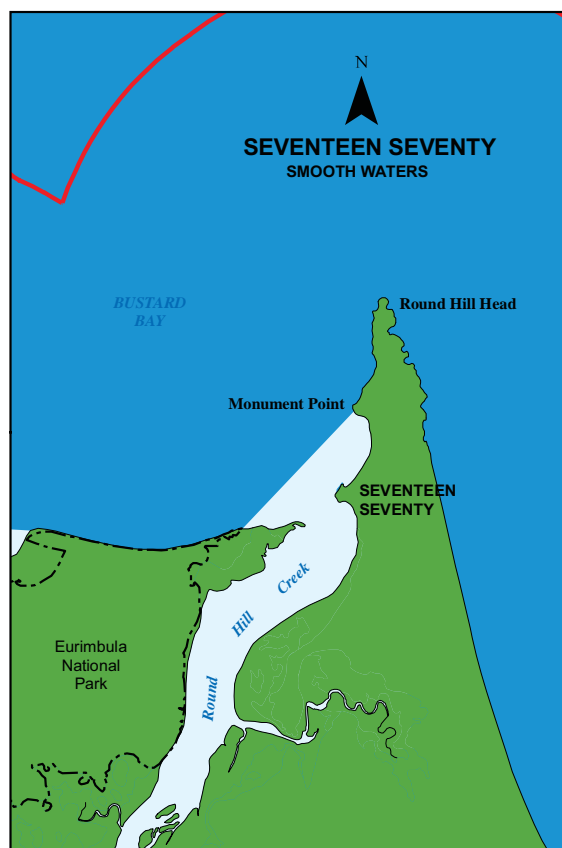
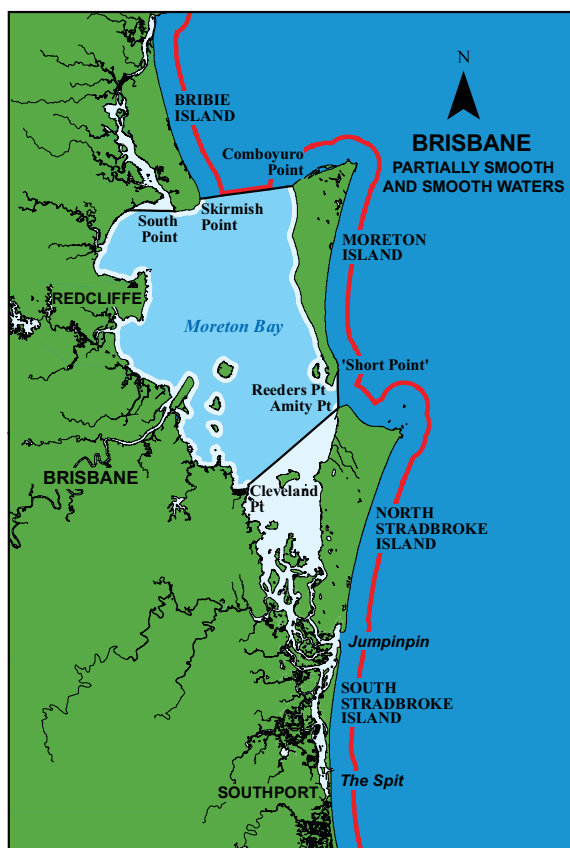
- Smooth waters — include rivers, creeks, streams and lakes; waters within breakwaters or revetments; and within half a nautical mile from land within partially smooth waters and other waters specified in legislation.
- Partially smooth waters — are determined by Maritime Safety Queensland and are specified in legislation.
- Beyond smooth and partially smooth waters — areas beyond these limits.

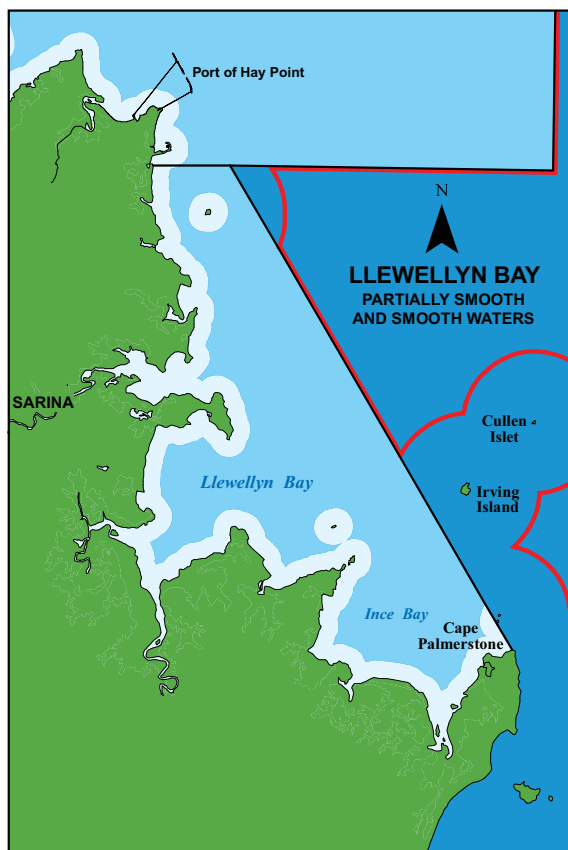
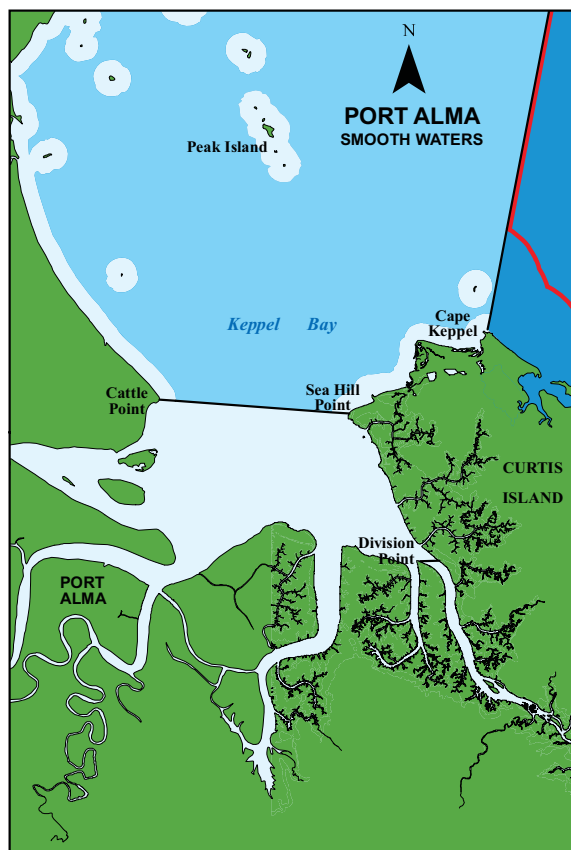
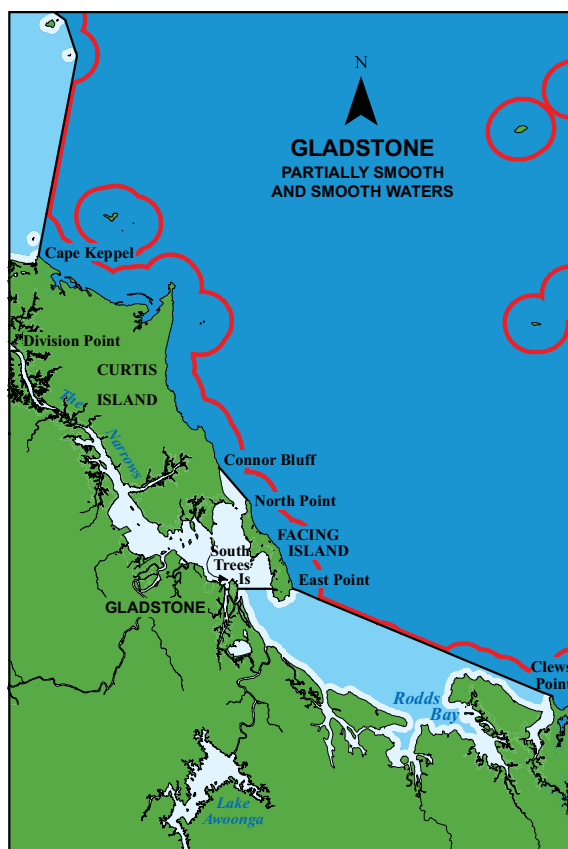
A complete list of maps showing these areas follows.

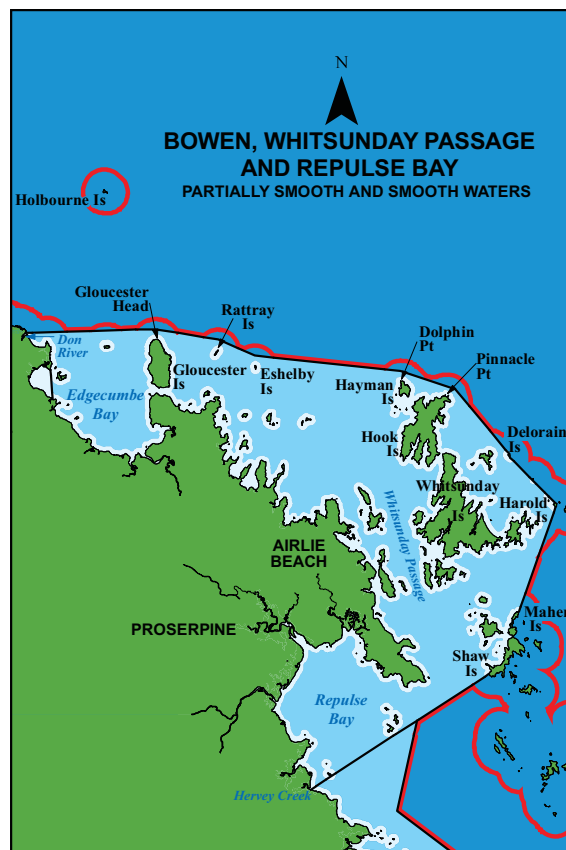
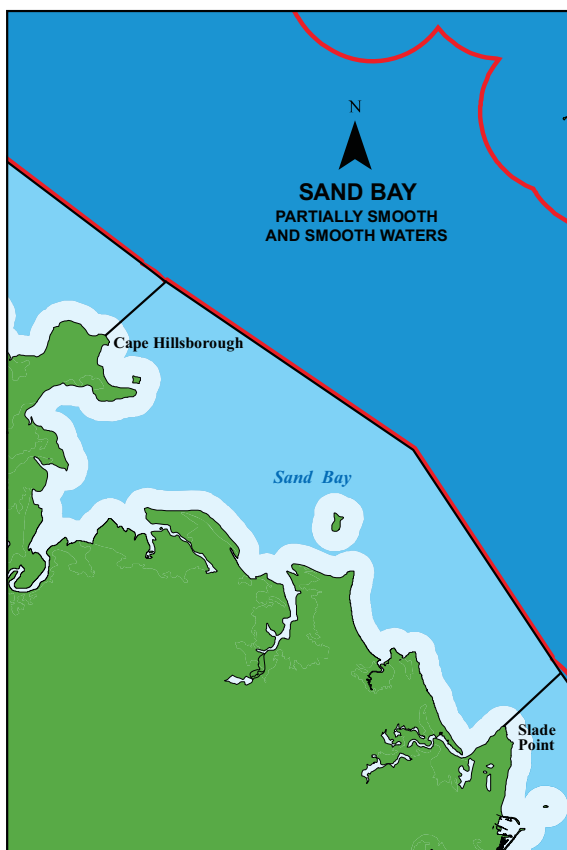
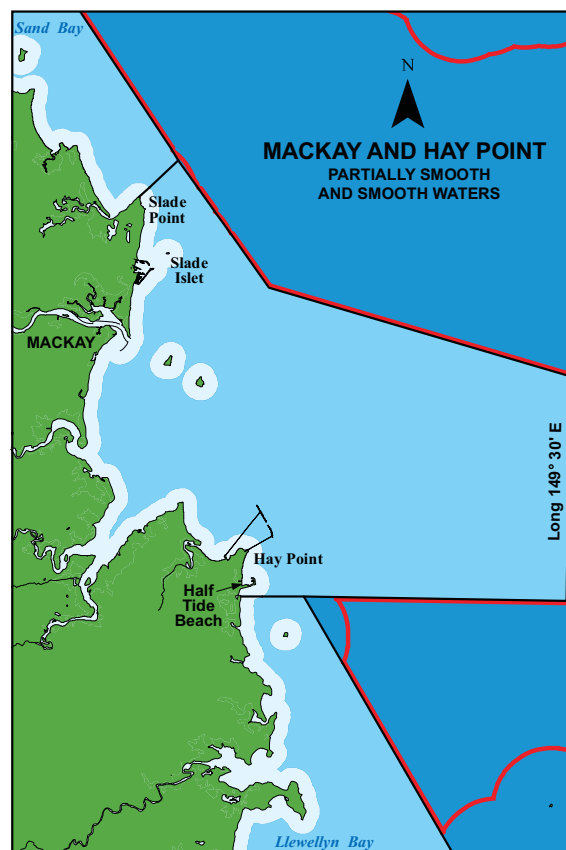
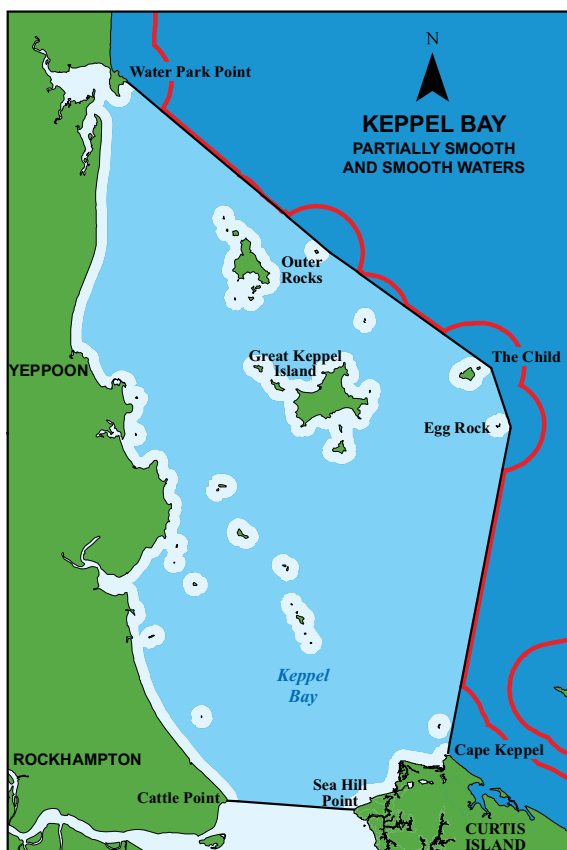
Legend

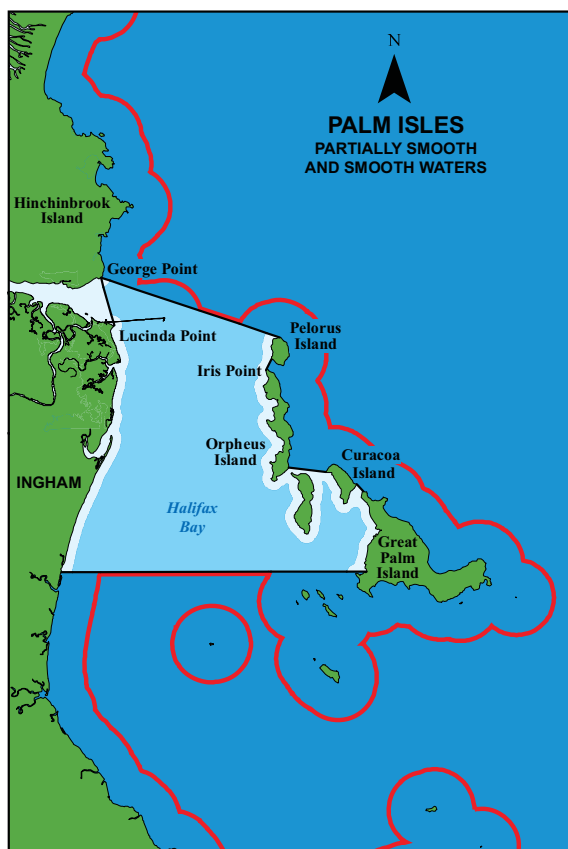
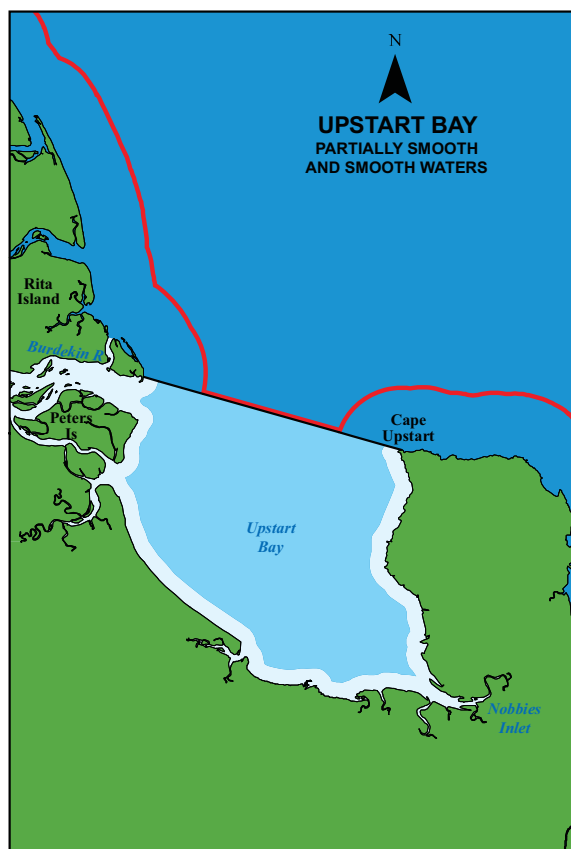
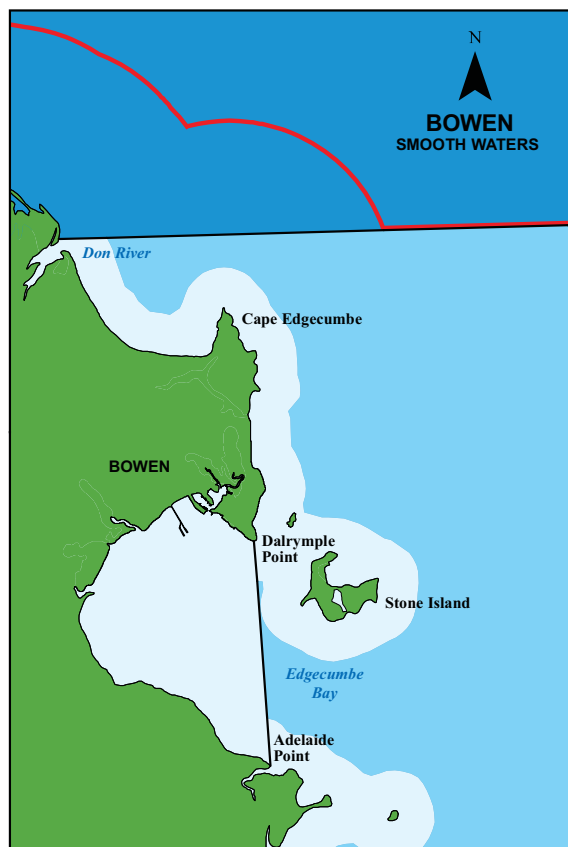
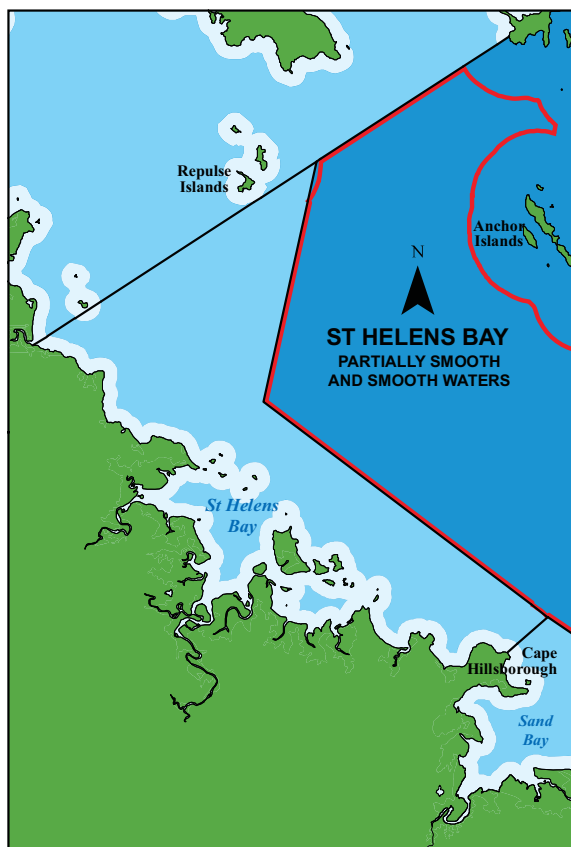
Smooth waters
 Partially smooth waters
 Beyond smooth and partially smooth waters

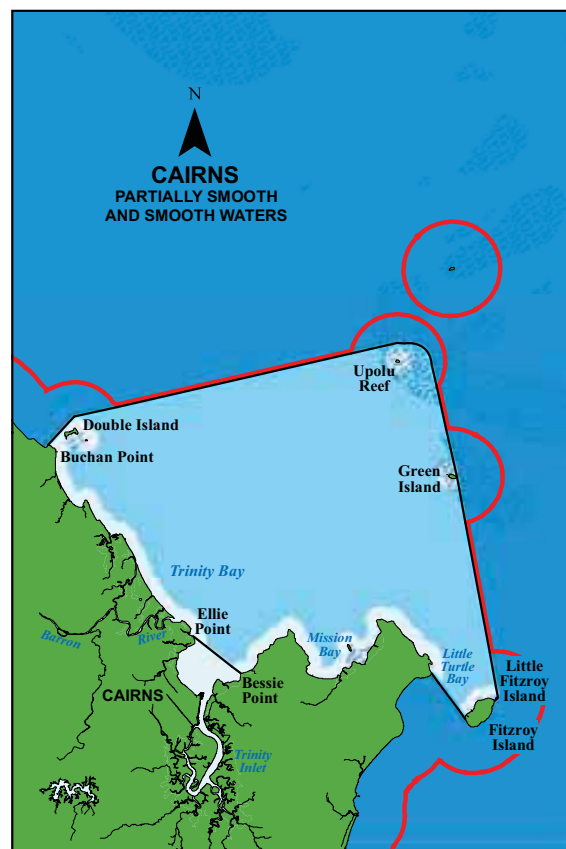
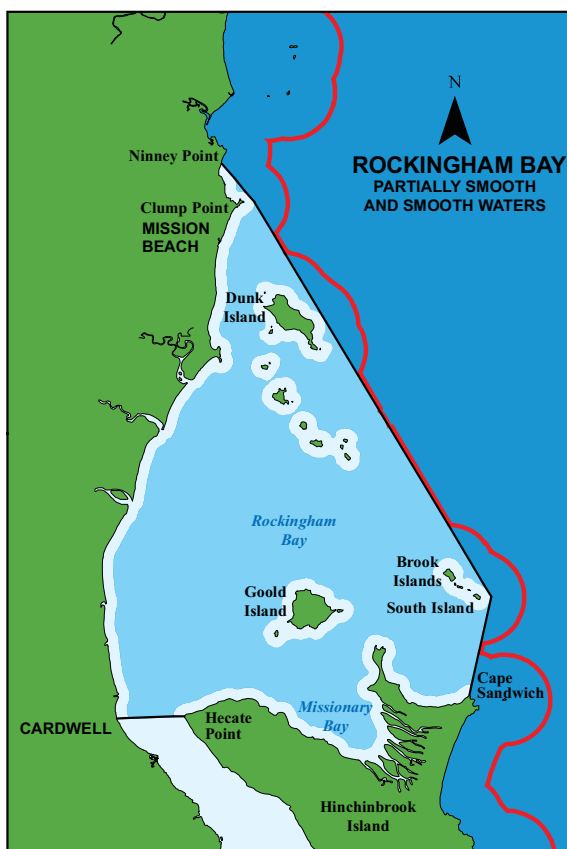
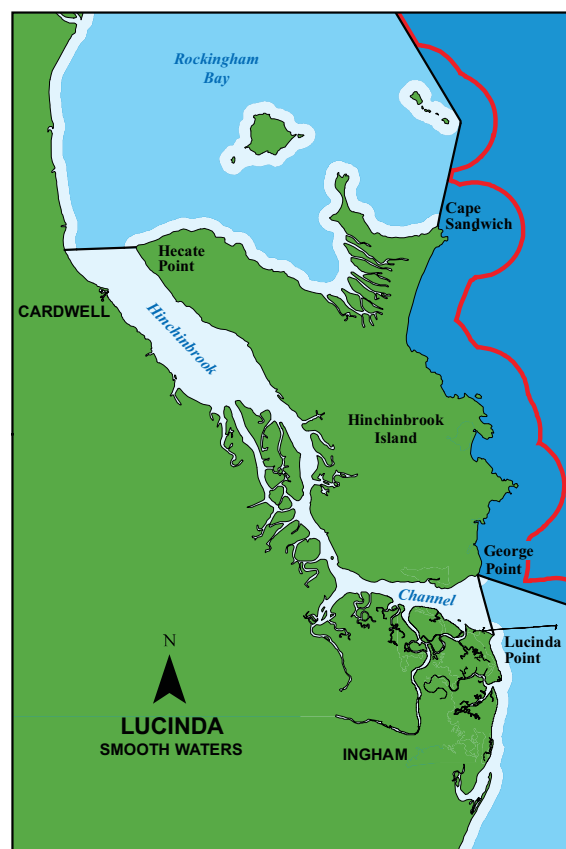
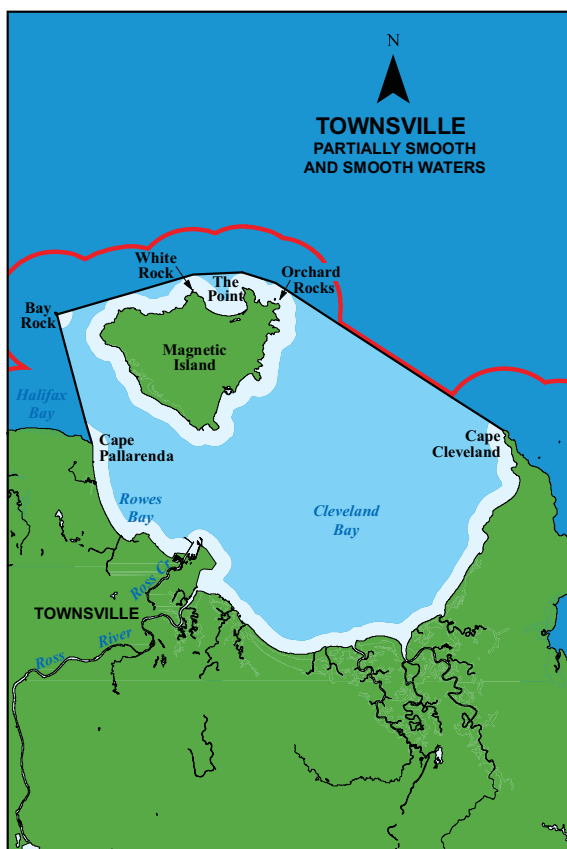
The red line designates limits beyond which EPIRBs must be carried.

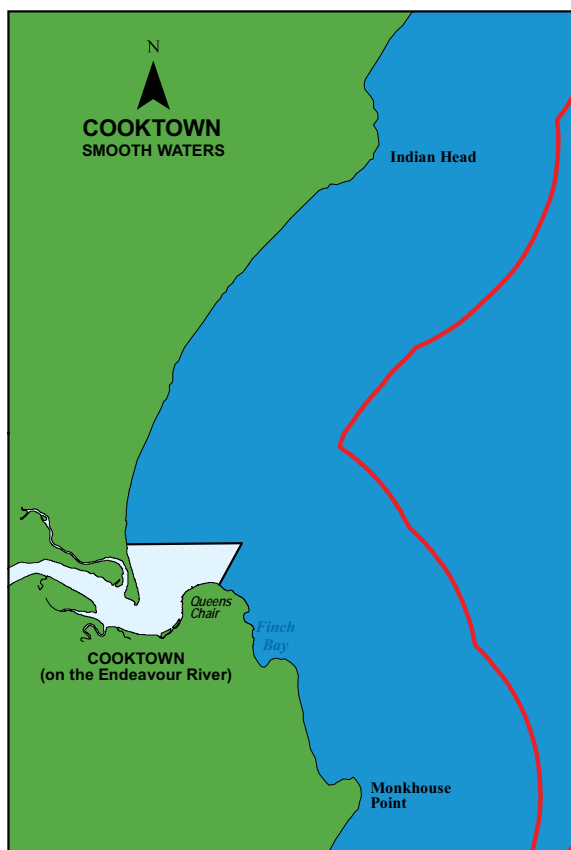
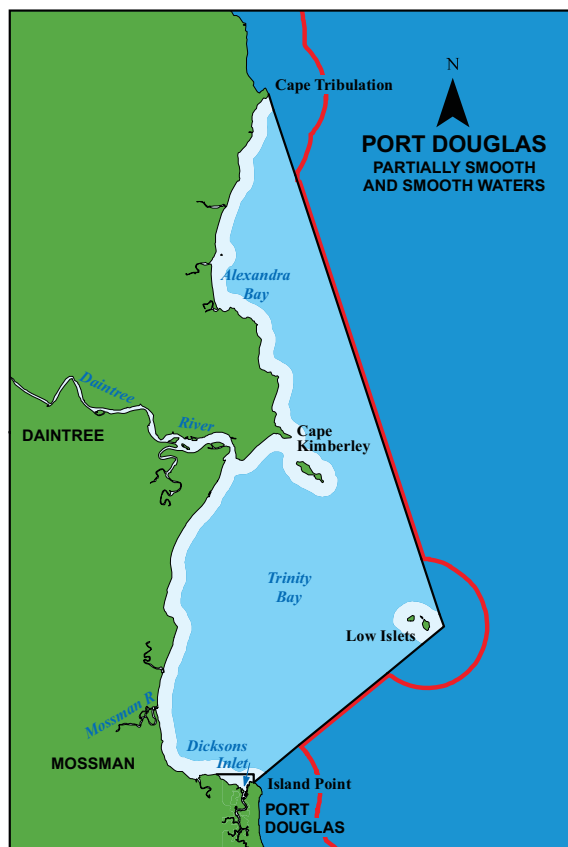
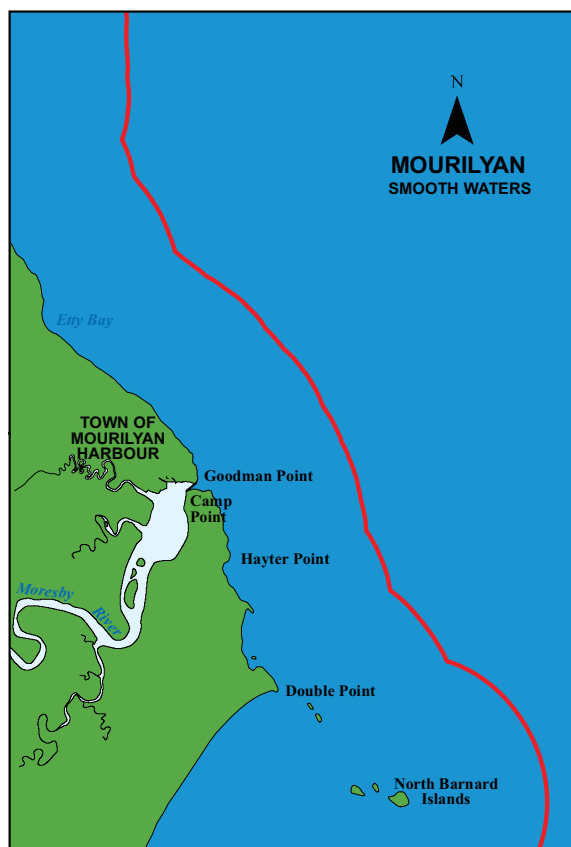


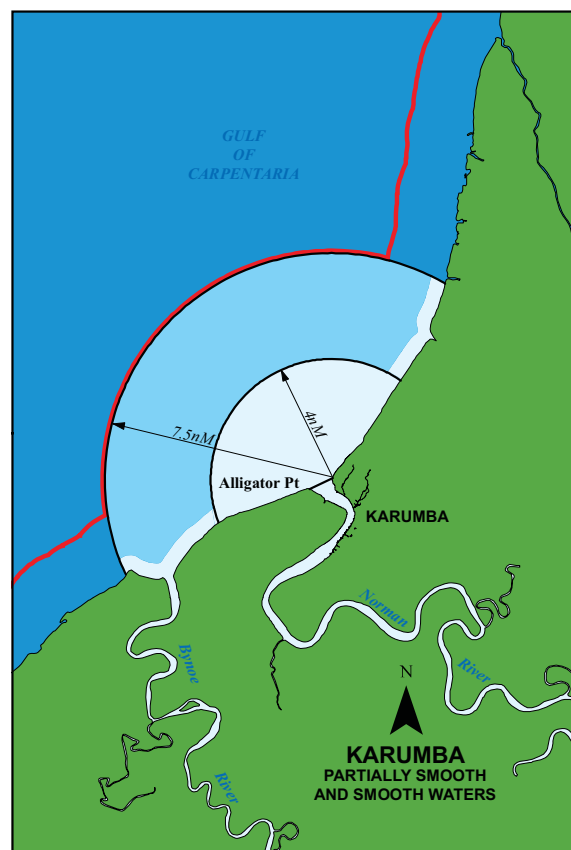
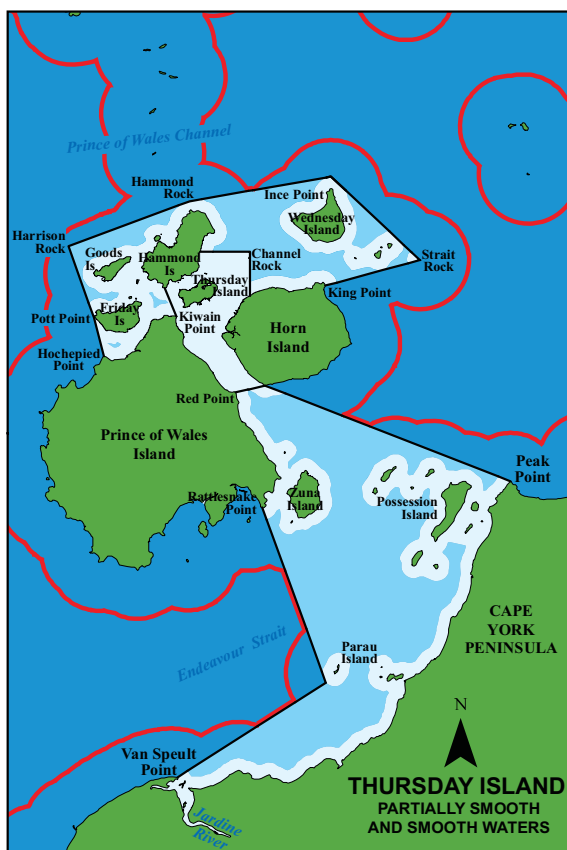














QPort Marine Services

Established 21 years

**Contract and Charter of Commercial Marine
Floating Plant, Services and Logistics.**



**CHARTER
TOWAGE
SERVICES**

Tugs, Barges, Workpunts, Drilling and Work Platforms, Crane Barge, Marine Equipment.

Local, Coastal and Interstate Tug and Barge, Heavy Lifts and Oversize Transfers by Barge.

Fabrication, Engineering, Wharves, Boardwalks, Jetties, Fendering, Marine Piling and Infrastructure.

Phone: 07 3893 0066

Email: info@qportmarine.com.au www.qportmarine.com.au