

Maritime Safety Queensland



Golden Beach, Caloundra

Beacon to Beacon Guide

Pumicestone Passage

Published by

Maritime Safety Queensland

© Copyright The State of Queensland
(Department of Transport and Main Roads) 2023



To view a copy of this licence, visit
<https://creativecommons.org/licenses/by/4.0/>

For commercial use terms and conditions

Please visit the Maritime Safety Queensland website at www.msq.qld.gov.au

'How to' use this guide

Use this Beacon to Beacon Guide with the 'How to' and legend booklet available from www.msq.qld.gov.au



Pumicestone Passage

Key Sheet



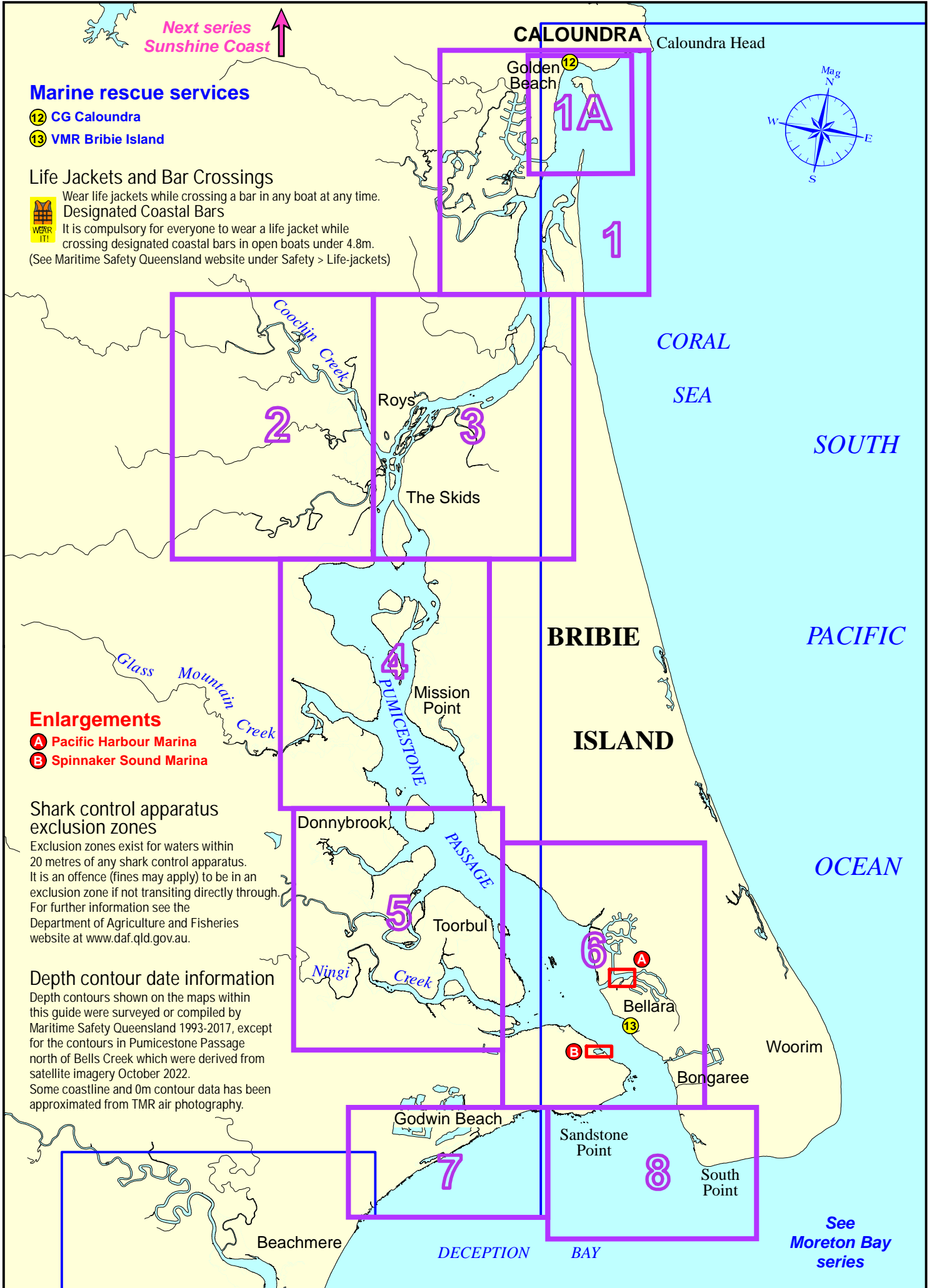
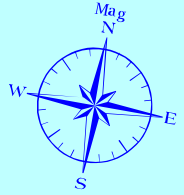
Next series
Sunshine Coast ↑

Marine rescue services

- 12 CG Caloundra
- 13 VMR Bribie Island

Life Jackets and Bar Crossings

Wear life jackets while crossing a bar in any boat at any time.
Designated Coastal Bars
 It is compulsory for everyone to wear a life jacket while crossing designated coastal bars in open boats under 4.8m.
 (See Maritime Safety Queensland website under Safety > Life-jackets)



Enlargements

- A Pacific Harbour Marina
- B Spinnaker Sound Marina

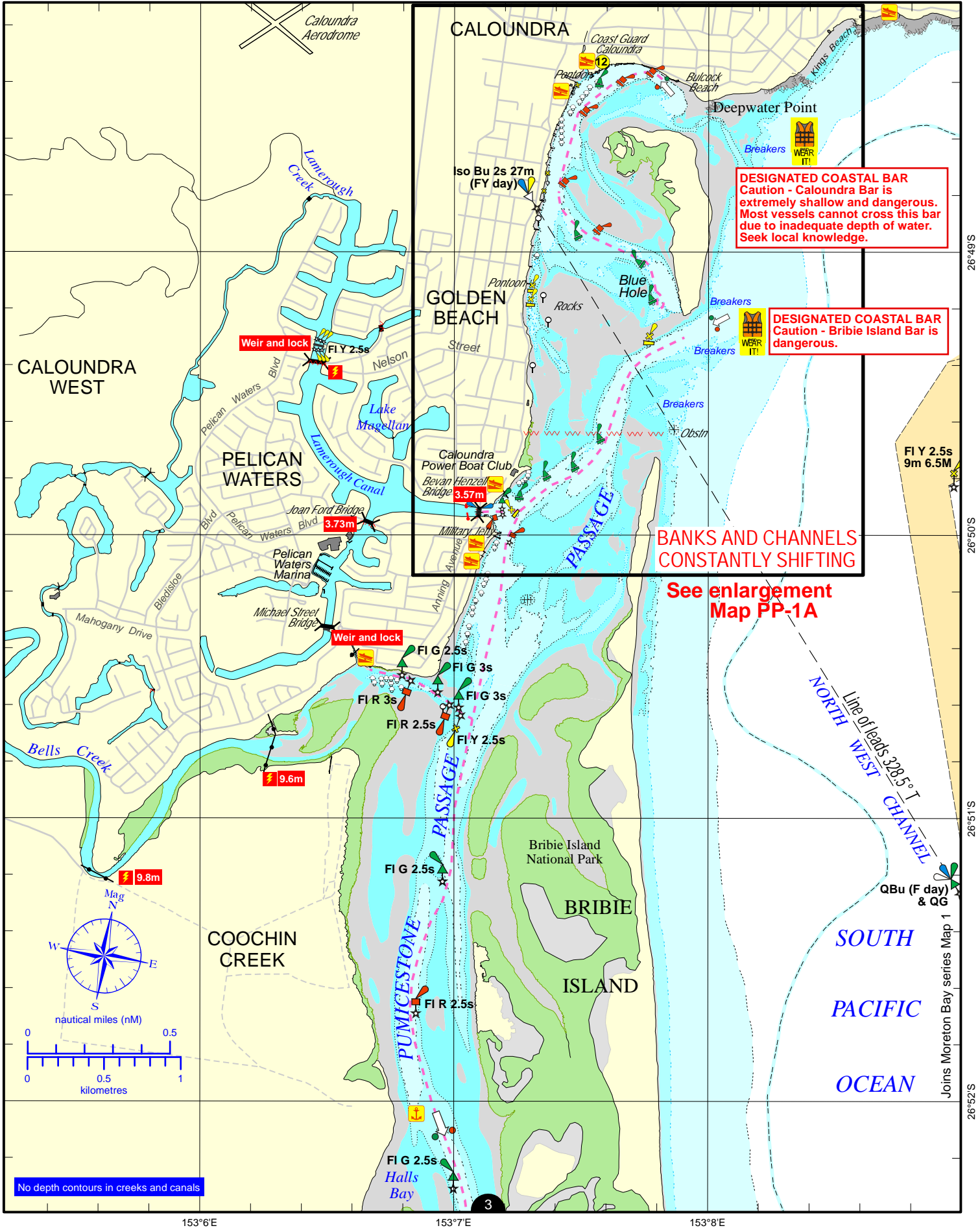
Shark control apparatus exclusion zones

Exclusion zones exist for waters within 20 metres of any shark control apparatus. It is an offence (fines may apply) to be in an exclusion zone if not transiting directly through. For further information see the Department of Agriculture and Fisheries website at www.daf.qld.gov.au.

Depth contour date information

Depth contours shown on the maps within this guide were surveyed or compiled by Maritime Safety Queensland 1993-2017, except for the contours in Pumicestone Passage north of Bells Creek which were derived from satellite imagery October 2022. Some coastline and 0m contour data has been approximated from TMR air photography.

See
Moreton Bay
series

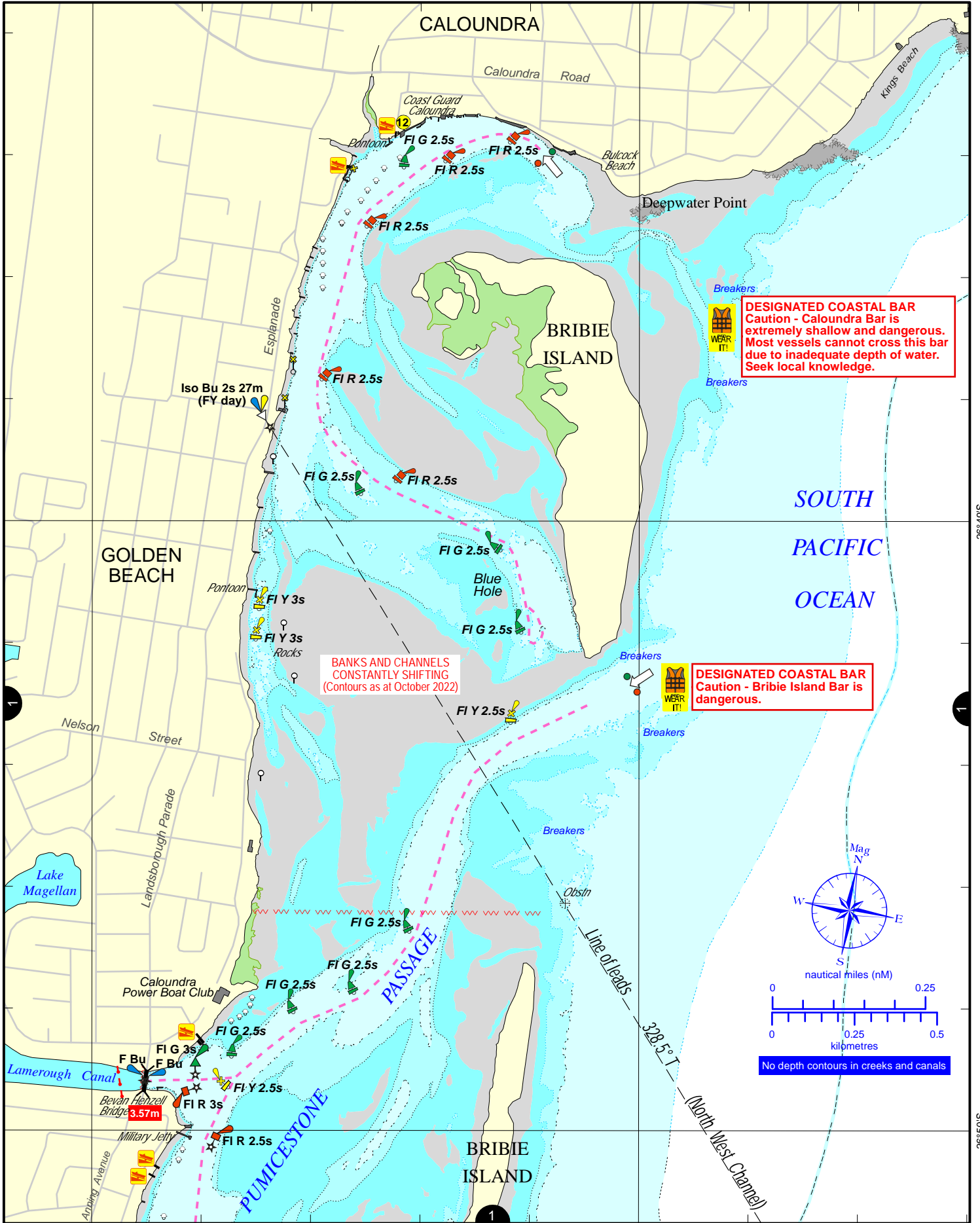


Always keep a proper lookout when boating. Exercise care at all times.
 Look up and live for power and cable crossings that may not be shown on these maps due to scale or recent construction.
 For depth contour date information, refer to the Key Sheet for this guide. Note that depths may change following floods.
 Exercise care when travelling outside suggested navigation tracks.

Nautical information current to 22 November 2023

© Copyright The State of Queensland 2023
 Queensland Department of Transport and Main Roads - Maritime Safety Queensland.
 To reproduce any map within this series, see terms and conditions at Maritime Safety Queensland's website (www.msq.qld.gov.au)





26°49'S

26°50'S

153°7'E

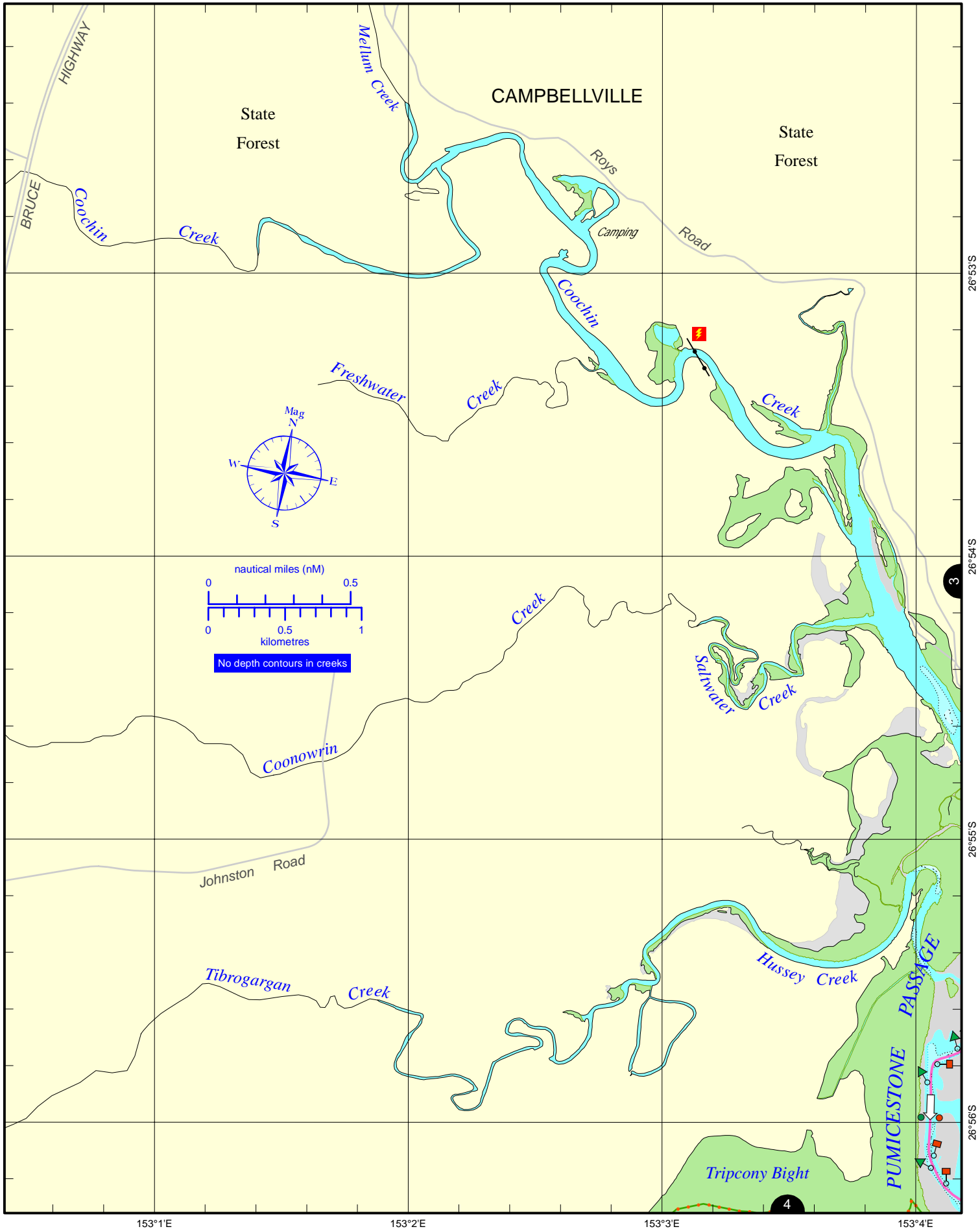
153°8'E

Always keep a proper lookout when boating. Exercise care at all times.
 Look up and live for power and cable crossings that may not be shown on these maps due to scale or recent construction.
 For depth contour date information, refer to the Key Sheet for this guide. Note that depths may change following floods.
 Exercise care when travelling outside suggested navigation tracks.

Nautical information current to 22 November 2023

© Copyright The State of Queensland 2023
 Queensland Department of Transport and Main Roads - Maritime Safety Queensland.
 To reproduce any map within this series, see terms and conditions at Maritime Safety Queensland's website (www.msq.qld.gov.au)





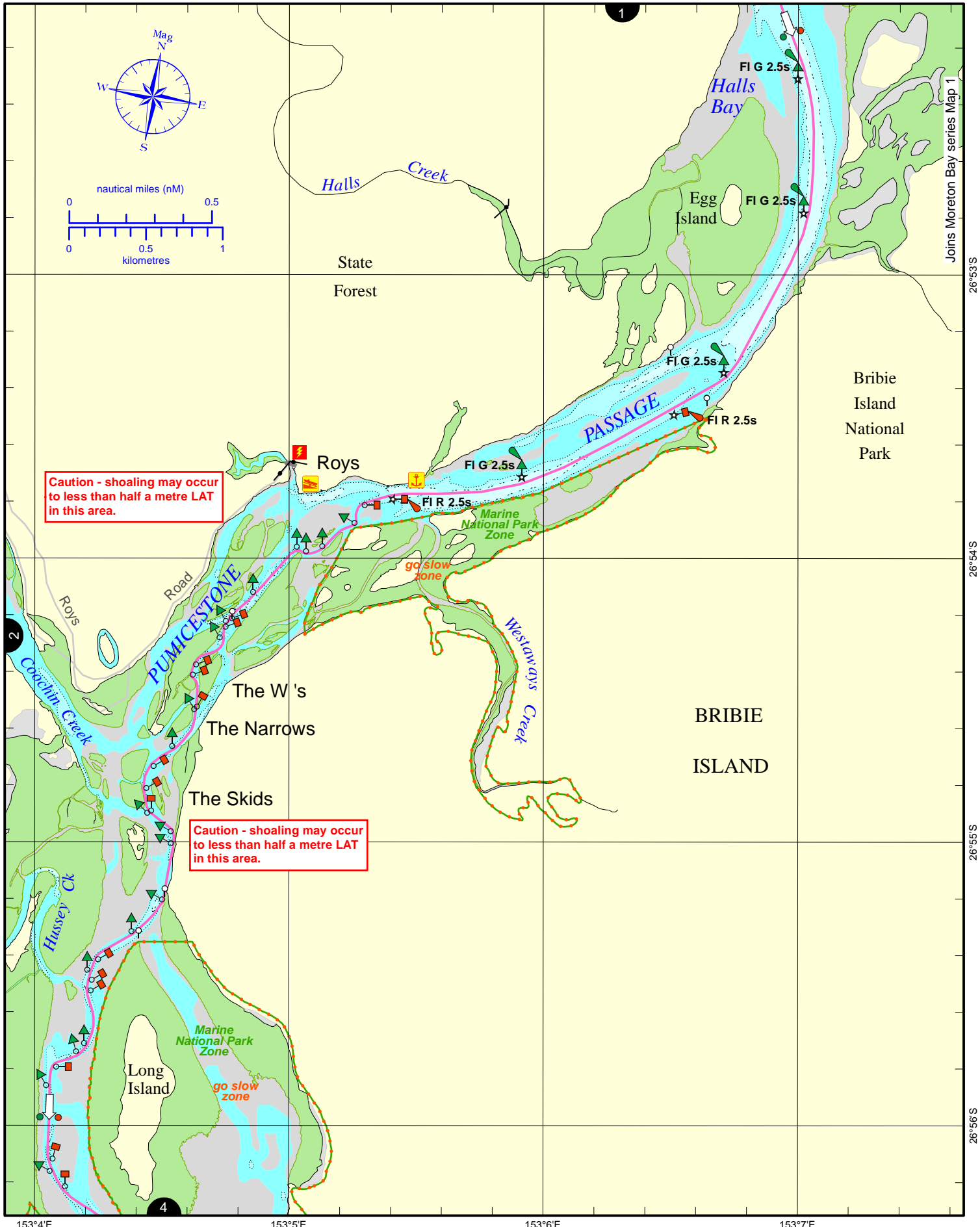


Always keep a proper lookout when boating. Exercise care at all times.
Look up and live for power and cable crossings that may not be shown on these maps due to scale or recent construction.
For depth contour date information, refer to the Key Sheet for this guide. Note that depths may change following floods.
Exercise care when travelling outside suggested navigation tracks.

Nautical information current to 8 December 2022

© Copyright The State of Queensland 2022
Queensland Department of Transport and Main Roads - Maritime Safety Queensland.
To reproduce any map within this series, see terms and conditions at Maritime Safety Queensland's website (www.msq.qld.gov.au)





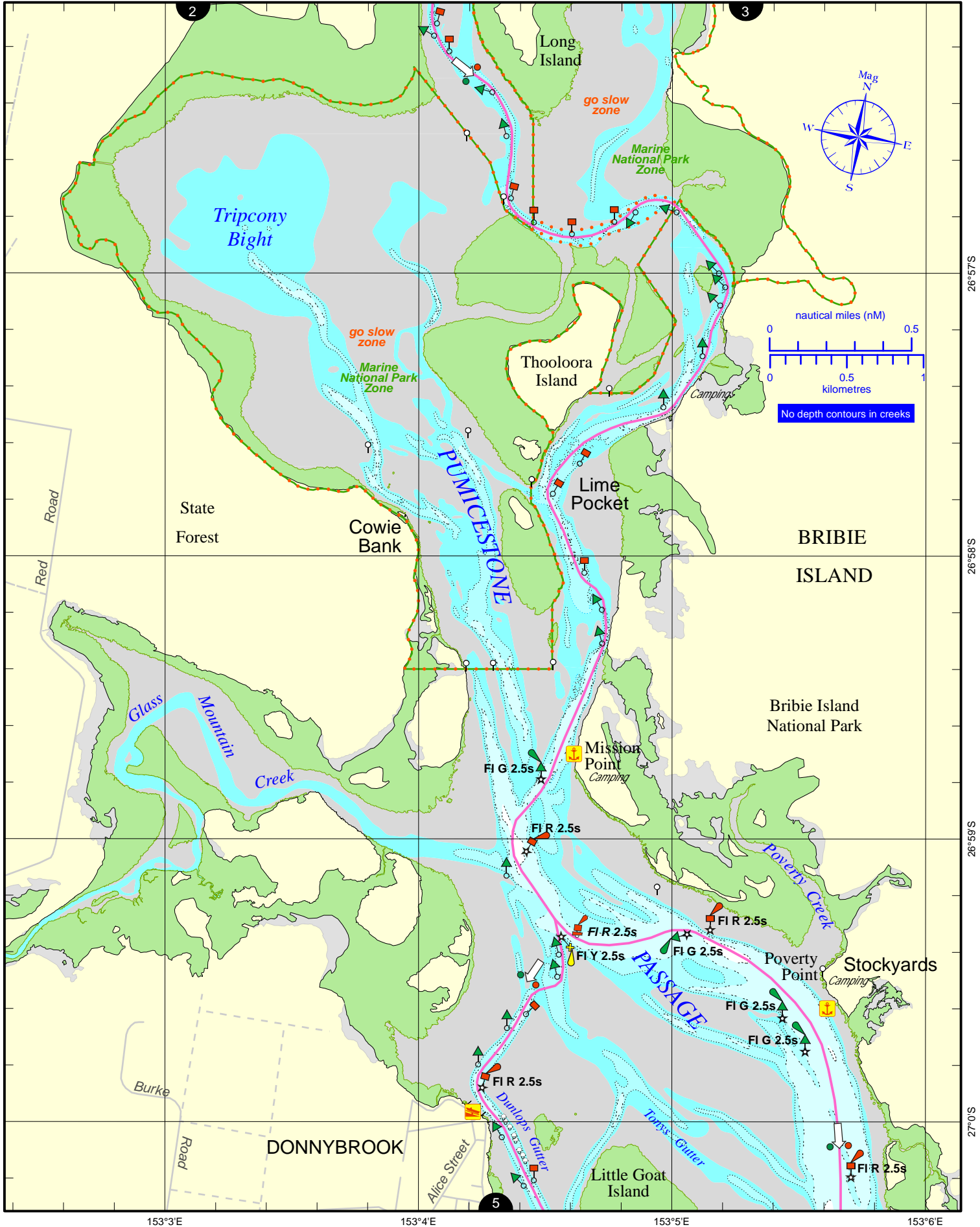
Always keep a proper lookout when boating. Exercise care at all times.
 Look up and live for power and cable crossings that may not be shown on these maps due to scale or recent construction.
 For depth contour date information, refer to the Key Sheet for this guide. Note that depths may change following floods.
 Exercise care when travelling outside suggested navigation tracks.

© Copyright The State of Queensland 2022
 Queensland Department of Transport and Main Roads - Maritime Safety Queensland.
 To reproduce any map within this series, see terms and conditions at Maritime Safety Queensland's website (www.msq.qld.gov.au)

Nautical information current to 19 January 2023

CC BY

Queensland Government



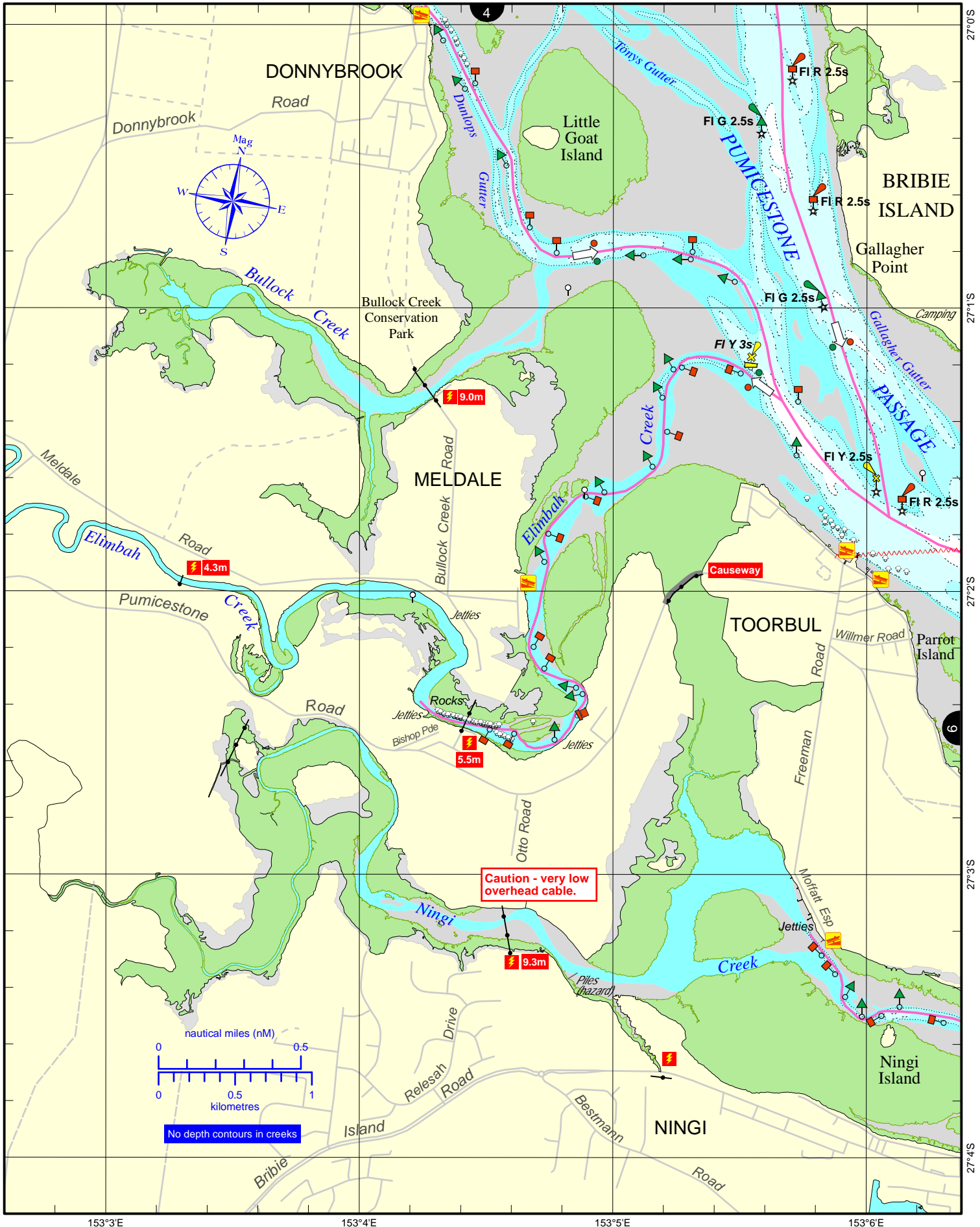
Always keep a proper lookout when boating. Exercise care at all times.
 Look up and live for power and cable crossings that may not be shown on these maps due to scale or recent construction.
 For depth contour date information, refer to the Key Sheet for this guide. Note that depths may change following floods.
 Exercise care when travelling outside suggested navigation tracks.

© Copyright The State of Queensland 2022
 Queensland Department of Transport and Main Roads - Maritime Safety Queensland.
 To reproduce any map within this series, see terms and conditions at Maritime Safety Queensland's website (www.msq.qld.gov.au)

Nautical information current to 8 December 2022

CC BY



Queensland Government

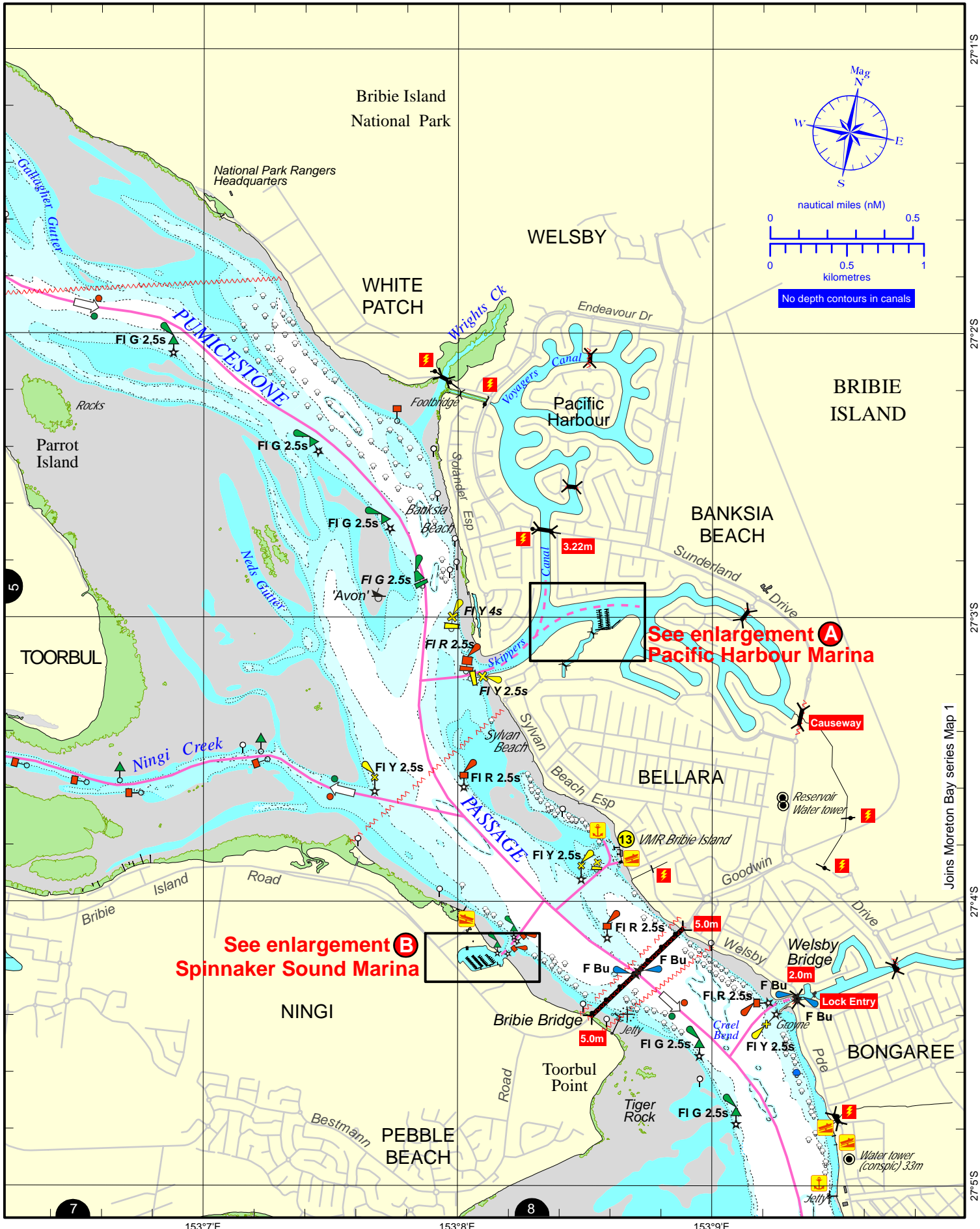


Always keep a proper lookout when boating. Exercise care at all times.
 Look up and live for power and cable crossings that may not be shown on these maps due to scale or recent construction.
 For depth contour date information, refer to the Key Sheet for this guide. Note that depths may change following floods.
 Exercise care when travelling outside suggested navigation tracks.

Nautical information current to 8 December 2022

© Copyright The State of Queensland 2022
 Queensland Department of Transport and Main Roads - Maritime Safety Queensland.
 To reproduce any map within this series, see terms and conditions at Maritime Safety Queensland's website (www.msq.qld.gov.au)

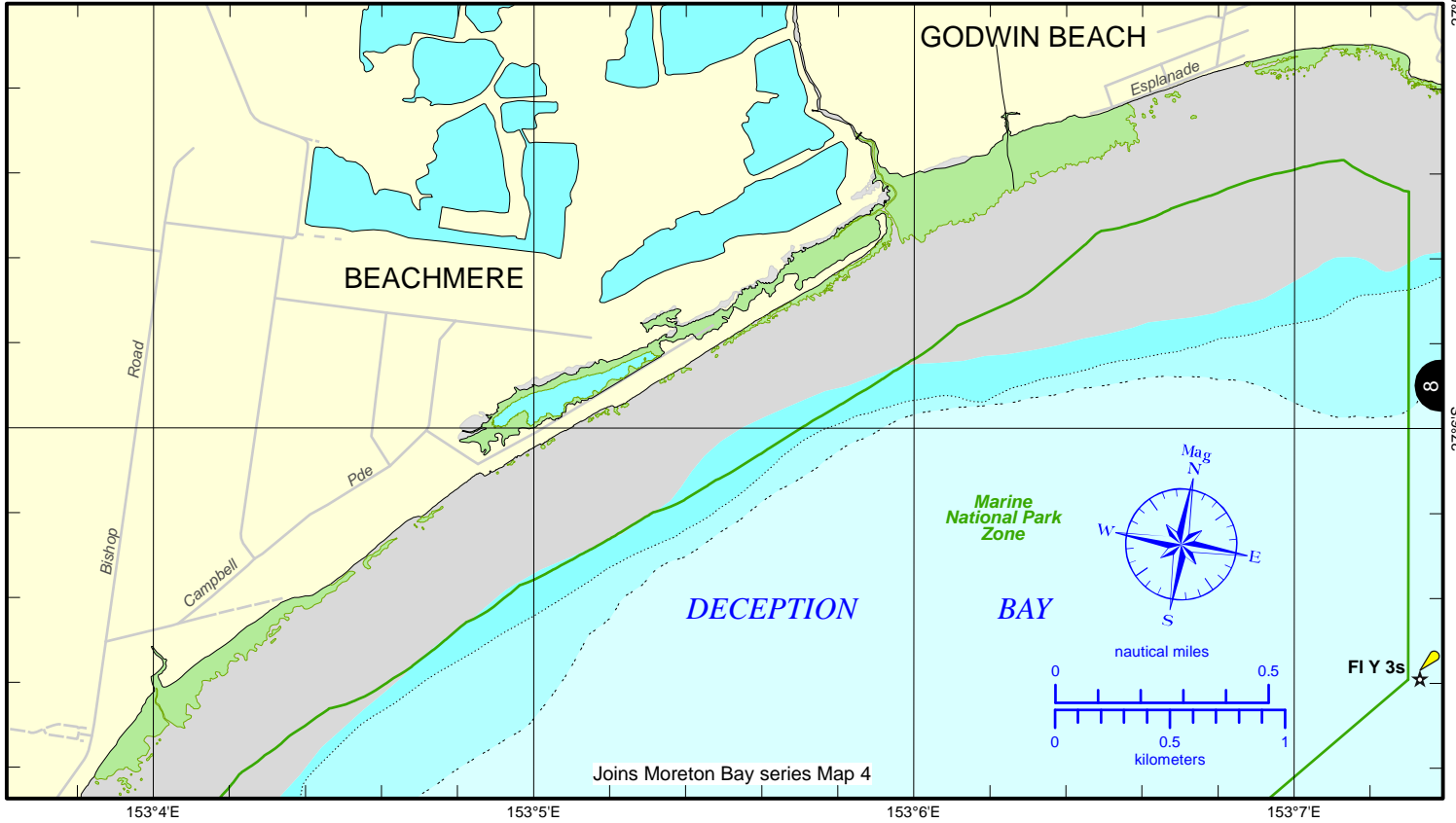


Joins Moreton Bay series Map 1

VMR Bribie Island: base phone 3408 7596, 7 Days 0500-1800, 27MHz 90 86 88, VHF 73 16 21 63 67 81.

CG Redcliffe: base phone 3203 5522, Mon-Fri 0600-1800, w/e and public hols 0400-1800, 27MHz 88 91, VHF 16 21 67 73 81, MF/HF 4125 2182 2524.

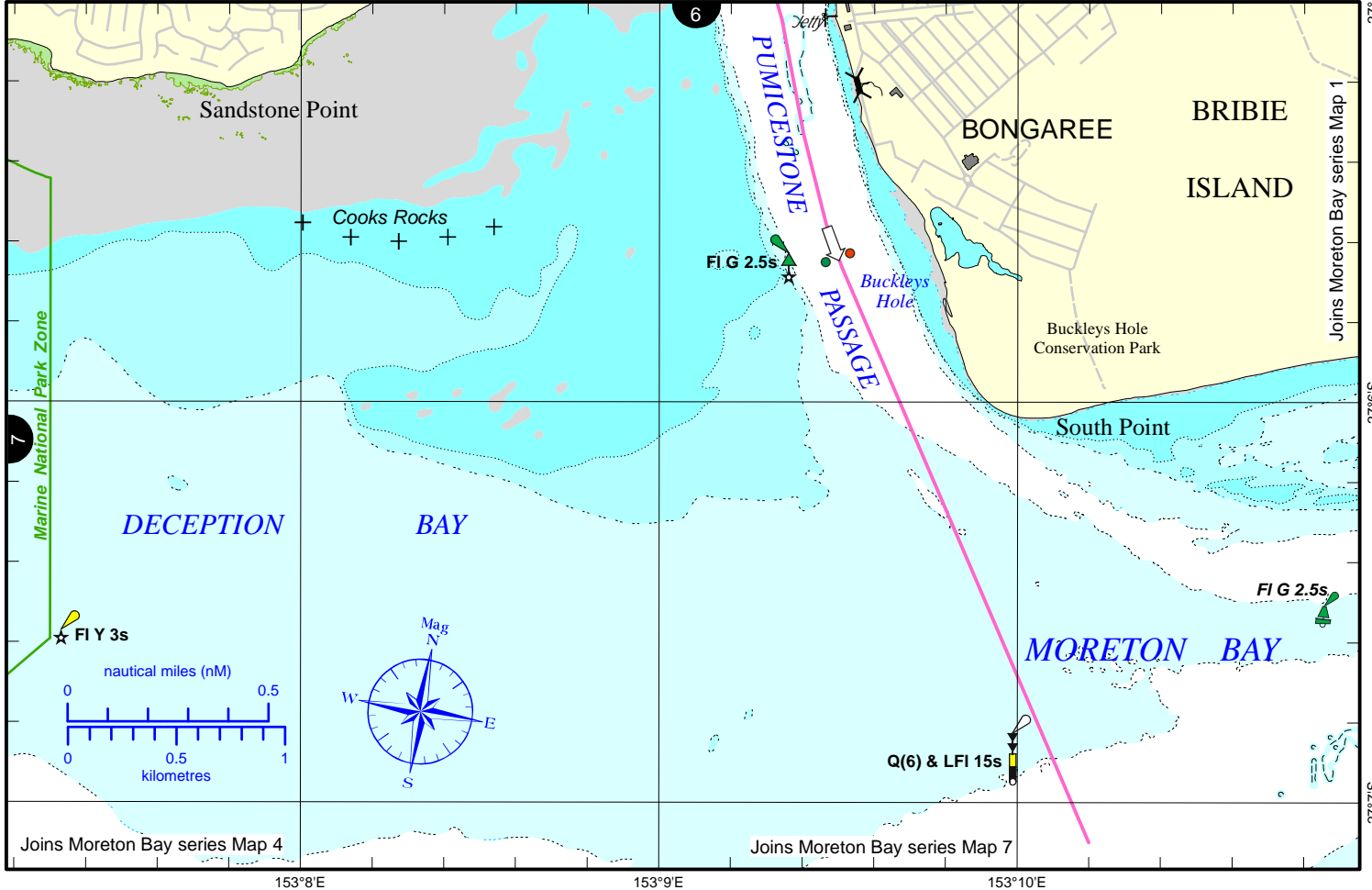
PP-7



VMR Bribie Island: base phone 3408 7596, 7 Days 0500-1800, 27MHz 90 86 88, VHF 73 16 21 63 67 81.

CG Redcliffe: base phone 3203 5522, Mon-Fri 0600-1800, w/e and public hols 0400-1800, 27MHz 88 91, VHF 16 21 67 73 81, MF/HF 4125 2182 2524.

PP-8



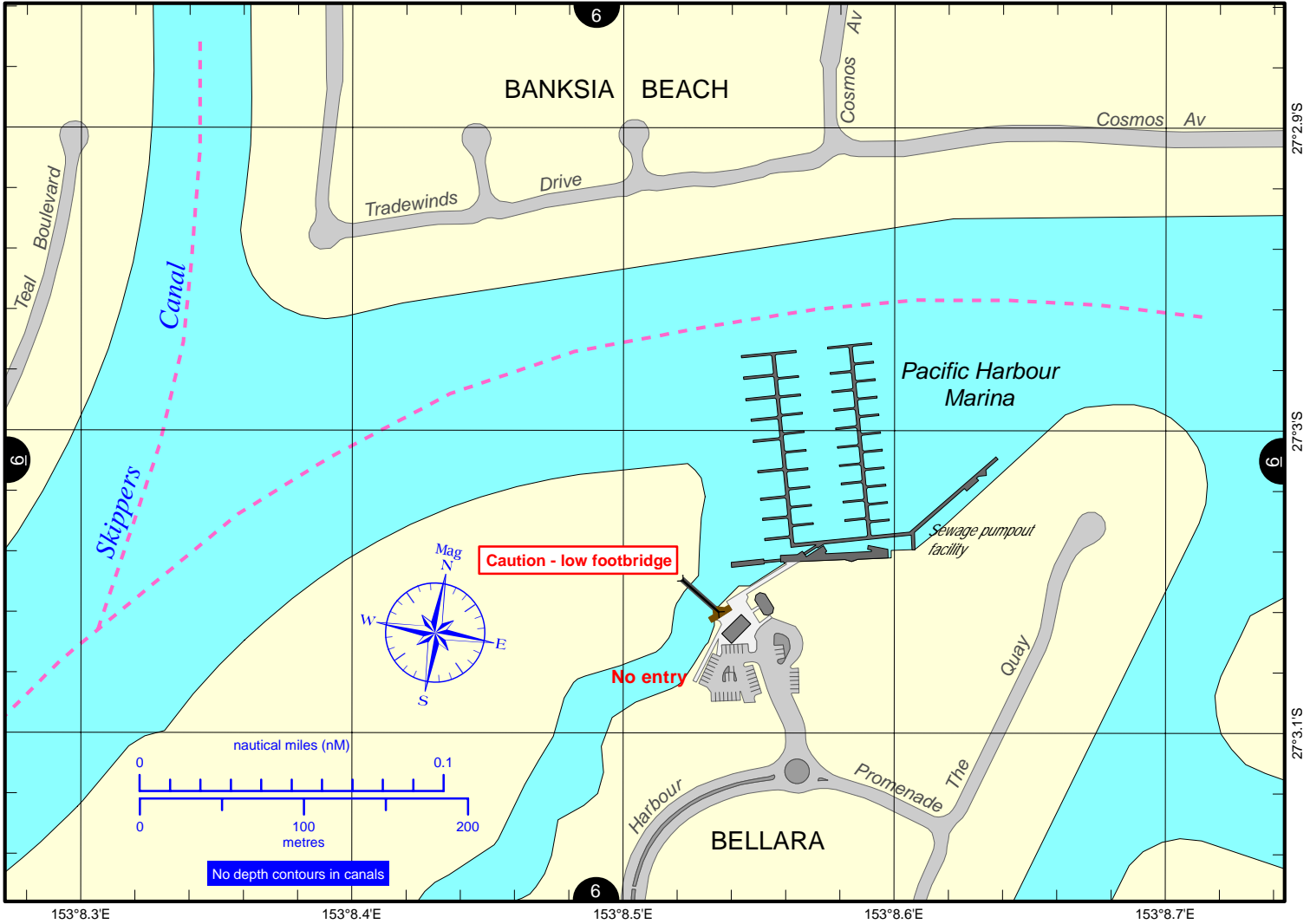
Always keep a proper lookout when boating. Exercise care at all times.
Look up and live for power and cable crossings that may not be shown on these maps due to scale or recent construction.
For depth contour date information, refer to the Key Sheet for this guide. Note that depths may change following floods.
Exercise care when travelling outside suggested navigation tracks.

Nautical information current to 8 December 2022

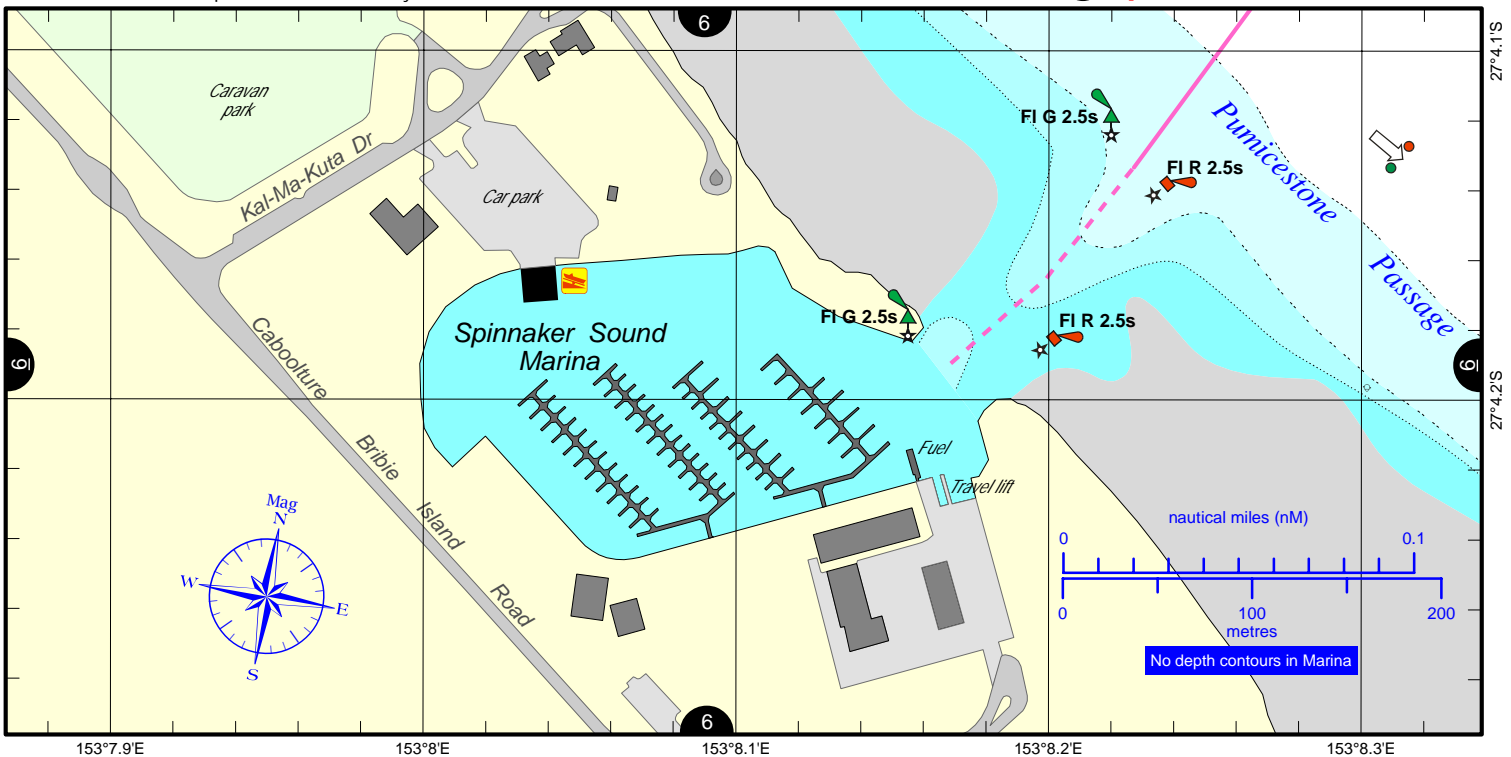
© Copyright The State of Queensland 2022
Queensland Department of Transport and Main Roads - Maritime Safety Queensland.
To reproduce any map within this series, see terms and conditions at Maritime Safety Queensland's website (www.msq.qld.gov.au)



A Pacific Harbour Marina



B Spinnaker Sound Marina



Always keep a proper lookout when boating. Exercise care at all times.
 Look up and live for power and cable crossings that may not be shown on these maps due to scale or recent construction.
 For depth contour date information, refer to the Key Sheet for this guide. Note that depths may change following floods.
 Exercise care when travelling outside suggested navigation tracks.

Nautical information current to 8 December 2022

