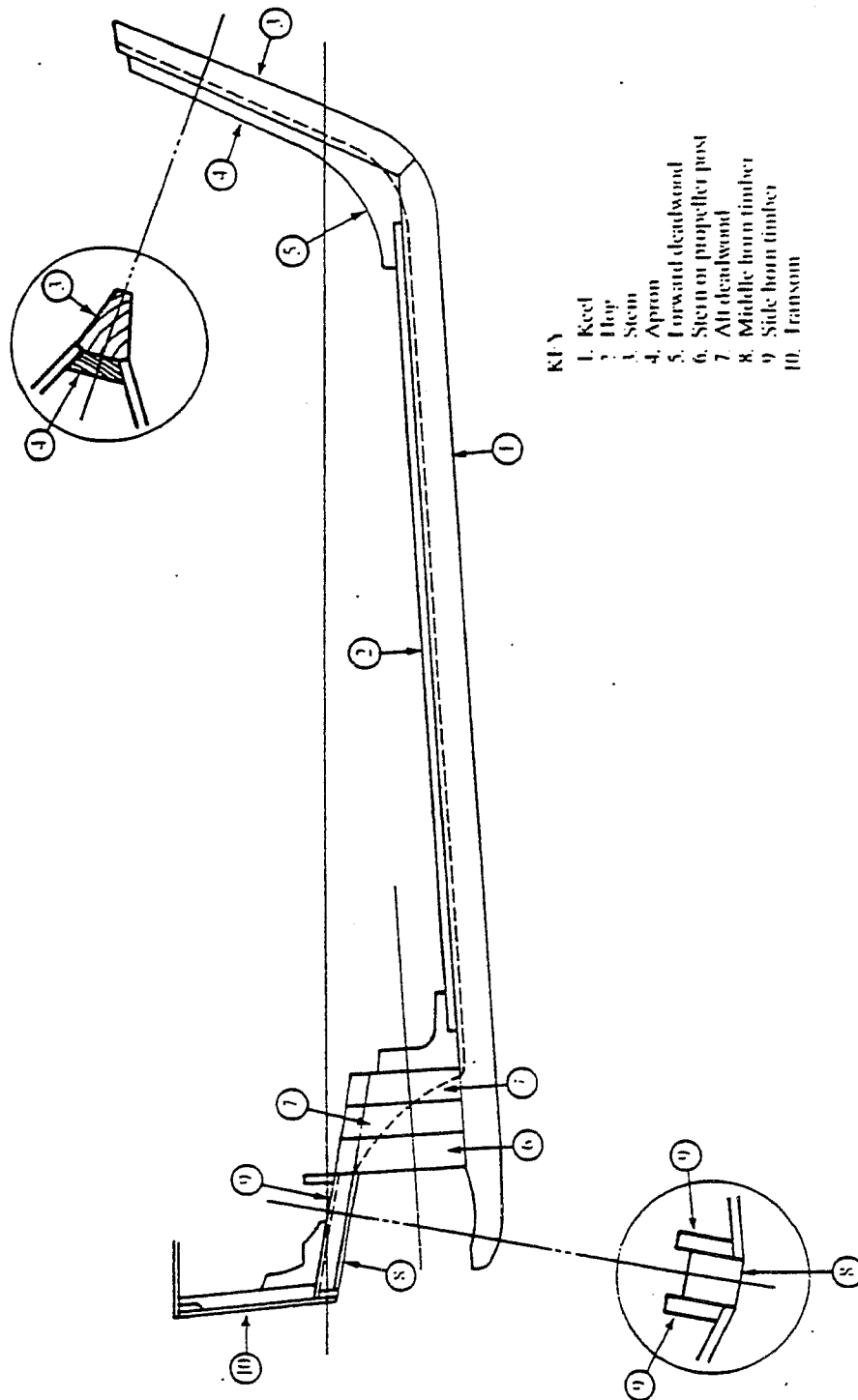


PROFILE

Fig. M.1.



- KEY
- 1. Keel
  - 2. Hog
  - 3. Stem
  - 4. Apron
  - 5. Forward deadwood
  - 6. Stern or propeller post
  - 7. Aft deadwood
  - 8. Middle horn timber
  - 9. Side horn timber
  - 10. Transom

Figure M.1

PROFILE

Fig. M.2.

TYPICAL SECTION CHINE HULL

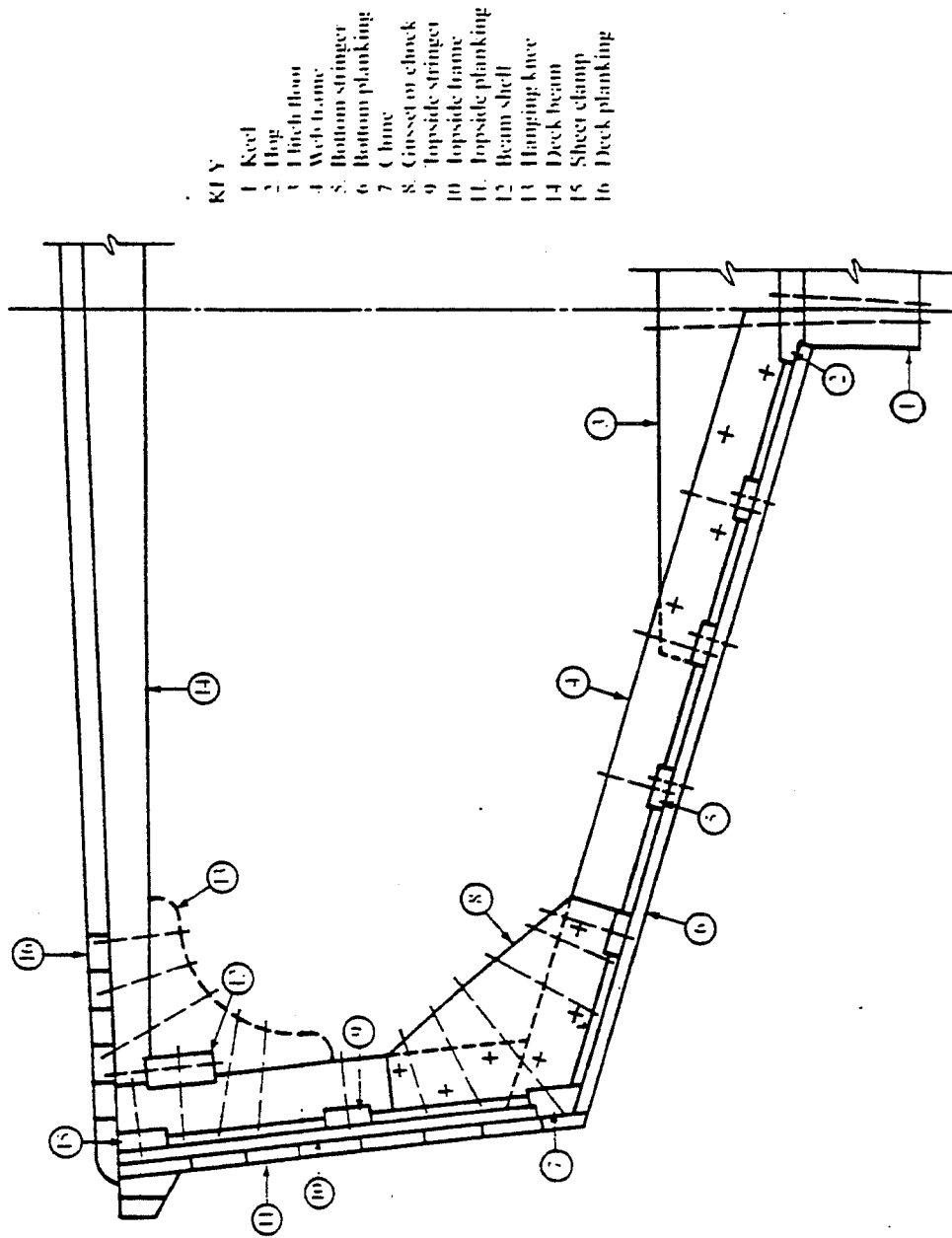


Figure M.2 TYPICAL SECTION CHINE HULL

ISOMETRIC VIEW

Fig. M.3.

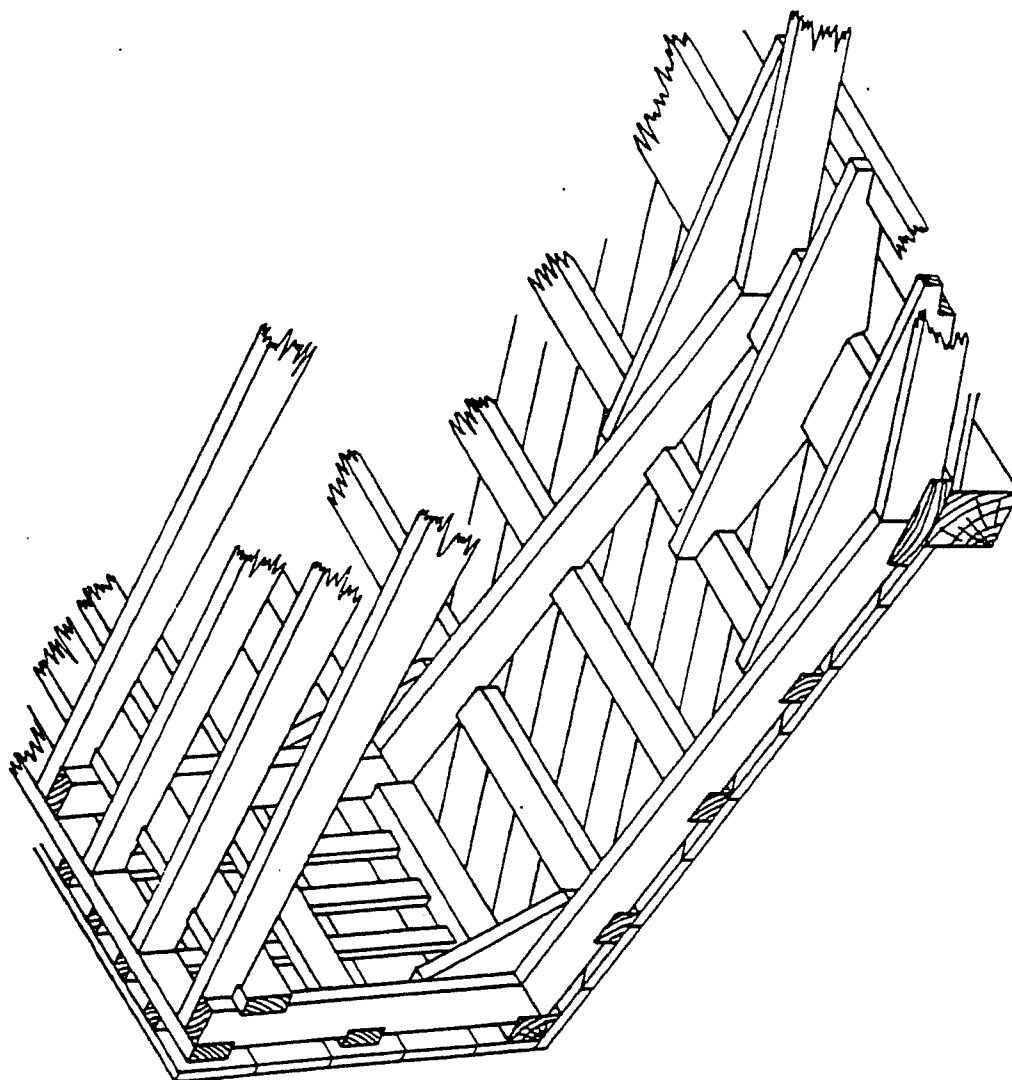


Figure M.3

ISOMETRIC VIEW

TYPICAL WEB FRAME CONSTRUCTION

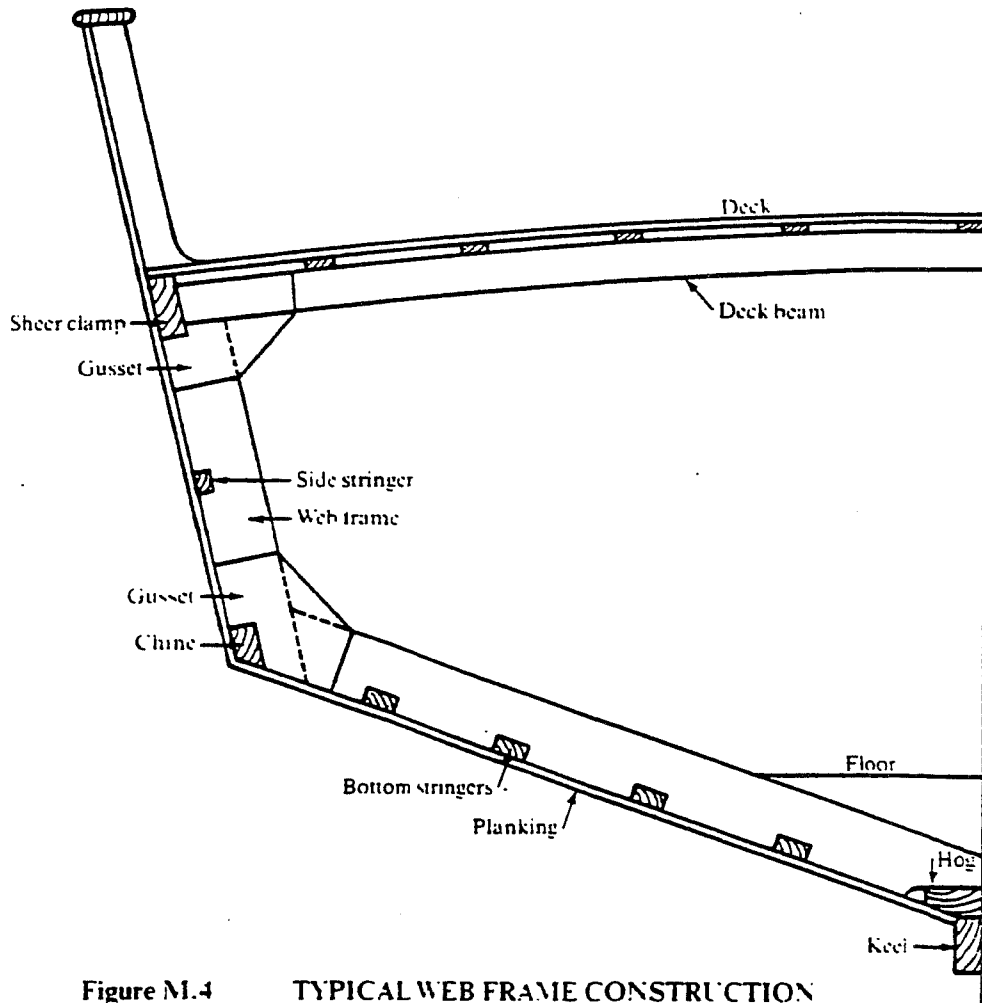
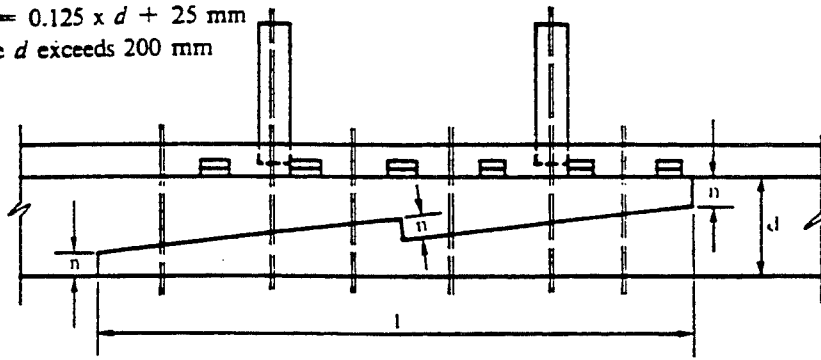
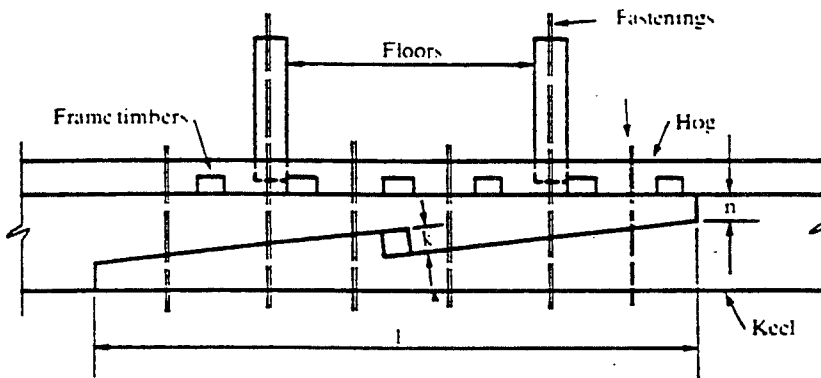


Figure M.4 TYPICAL WEB FRAME CONSTRUCTION

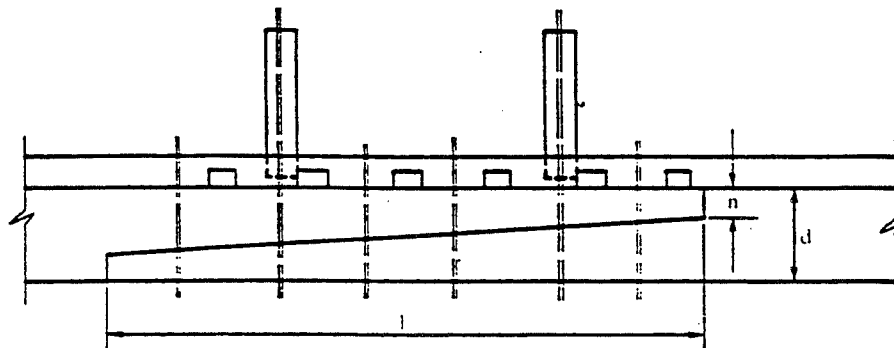
$l = 6 \times d$   
 $k = n$   
 $d = \text{Depth of Keel}$   
 $n = 0.25 \times d$   
 or  $n = 0.125 \times d + 25 \text{ mm}$   
 where  $d$  exceeds 200 mm



**HOOKED SCARPH**



**KEYED HOOKED SCARPH**



**PLAIN SCARPH**

**Figure M.5 COMMON FORMS OF SCARPHS**

TYPICAL STEM ASSEMBLY  
Fig. M.6.

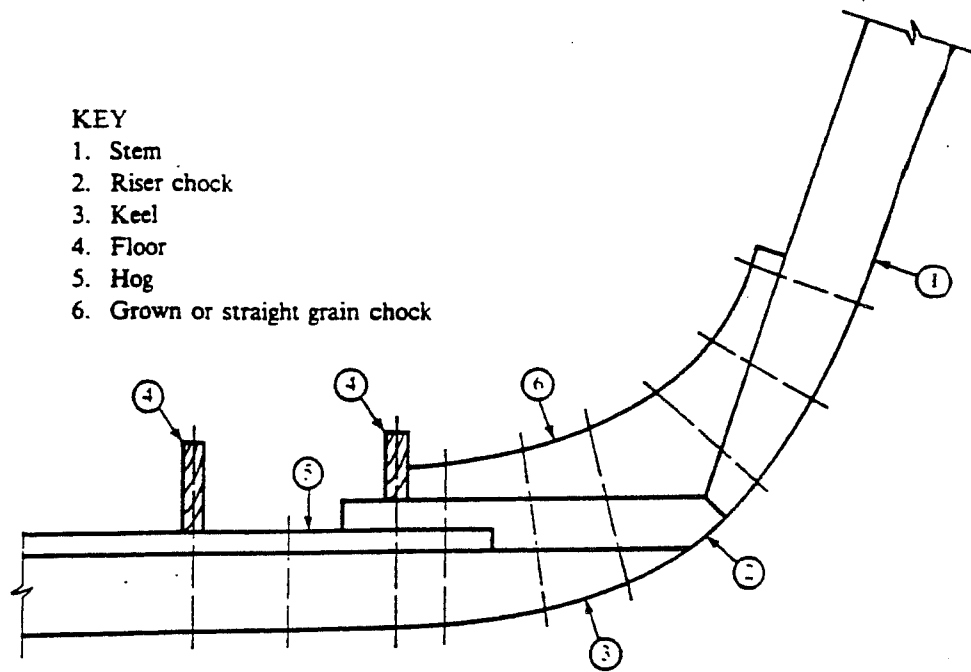


Figure M.6 TYPICAL STEM ASSEMBLY

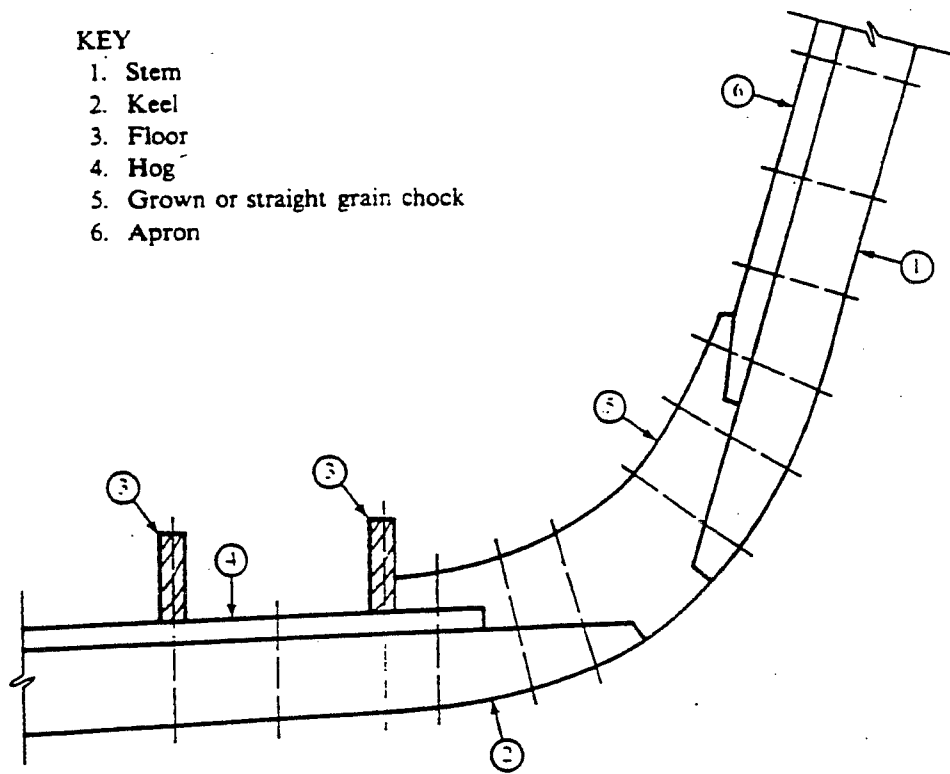
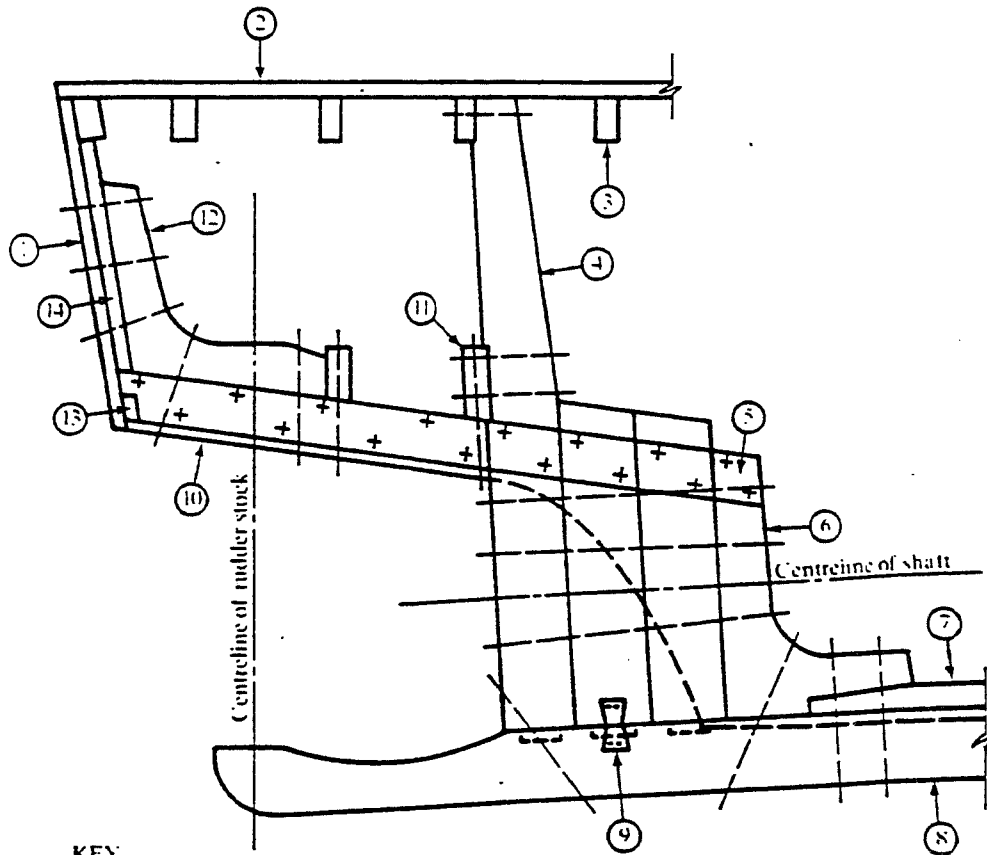


Figure M.7

ALTERNATIVE TYPICAL STEM ASSEMBLY

TYPICAL DEADWOOD AFT

Fig. M.8.



KEY

- 1. Planking
- 2. Deck planking
- 3. Deck beams
- 4. Stern or propeller post
- 5. Side horn timbers bolted to deadwood
- 6. Deadwood knee
- 7. Hog piece
- 8. Keel
- 9. Dovetail plate
- 10. Outside rabbet line
- 11. 'Transom Floor'
- 12. Transom knee
- 13. Transom margin
- 14. Transom stiffener

Figure M.8

TYPICAL DEADWOOD AFT

TYPICAL DEADWOOD AFT

Fig. M.9.

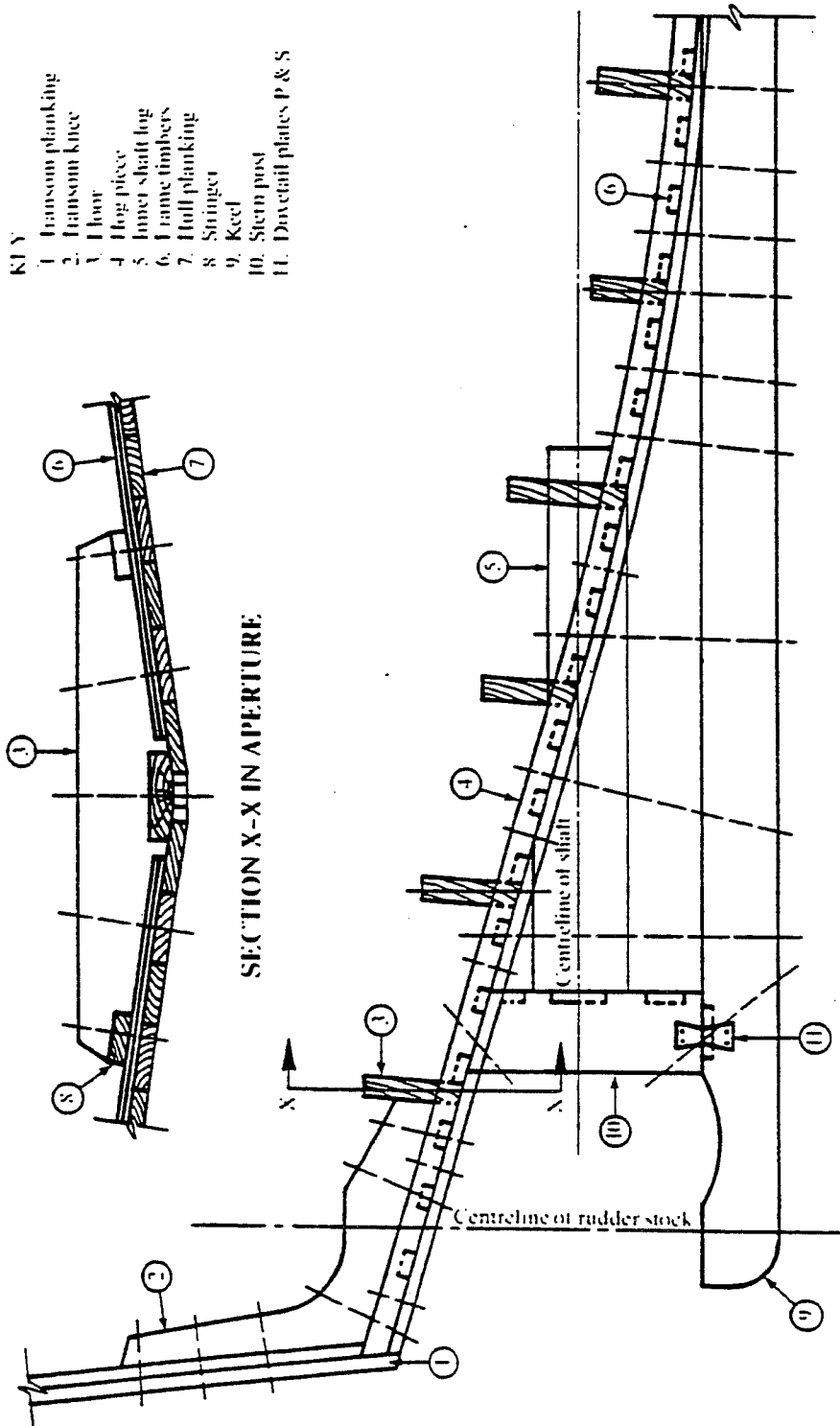


Figure M.9

TYPICAL DEADWOOD AFT

TYPICAL DEADWOOD AFT

Fig. M.10.

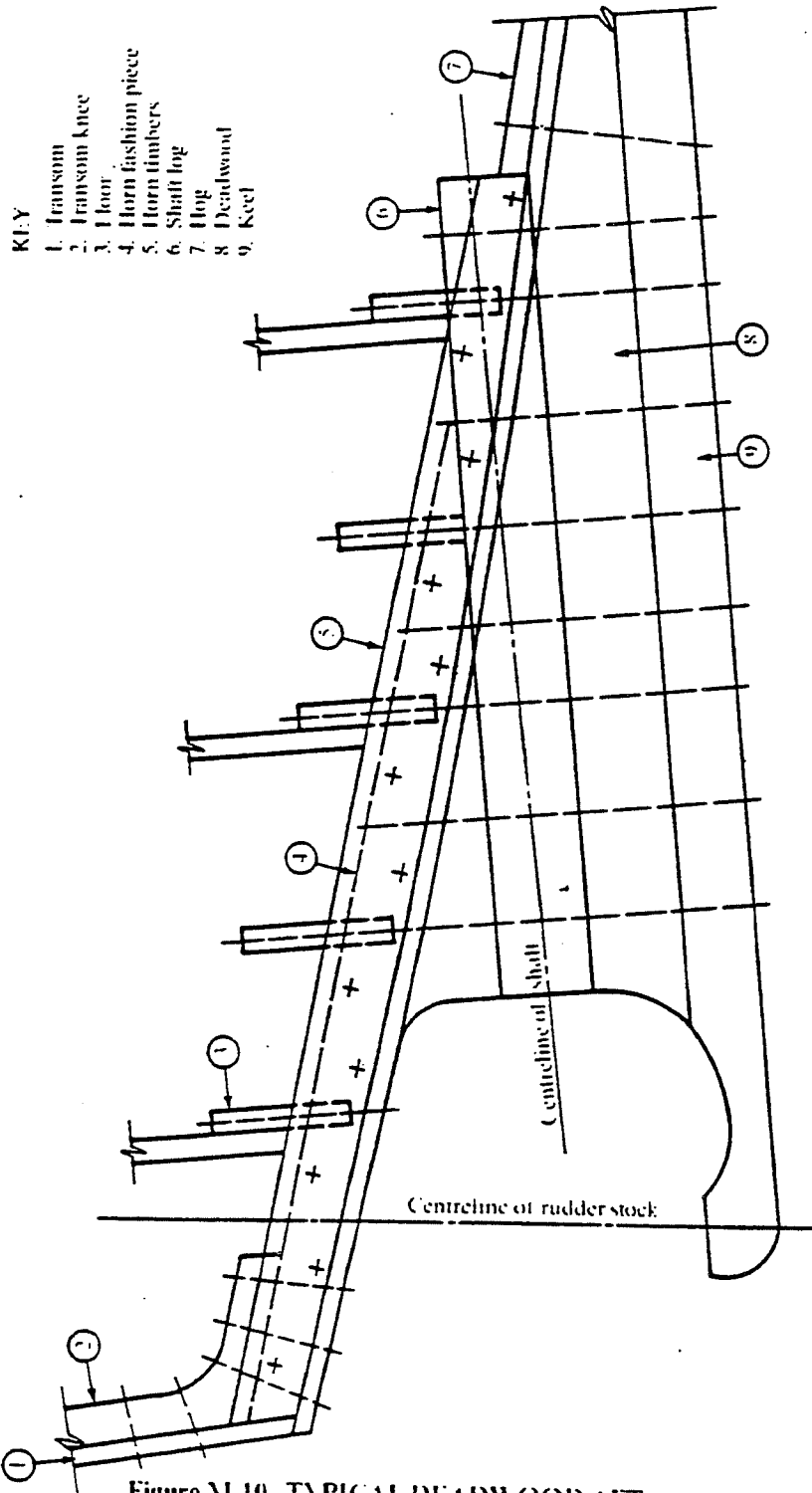


Figure M.10 TYPICAL DEADWOOD AFT

TYPICAL MIDSHIP SECTION  
BILGE TYPE HULL

Fig. M.11.

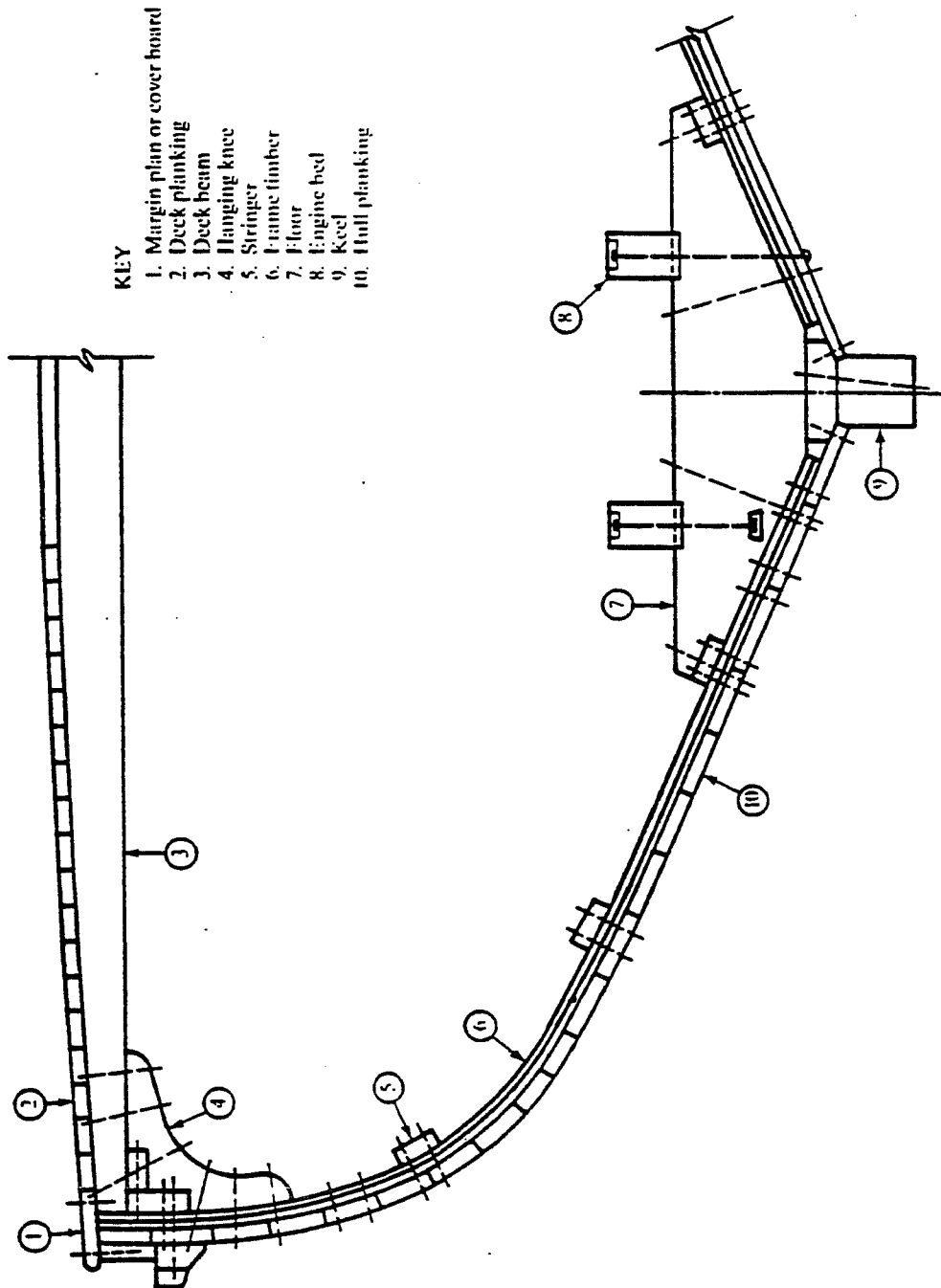
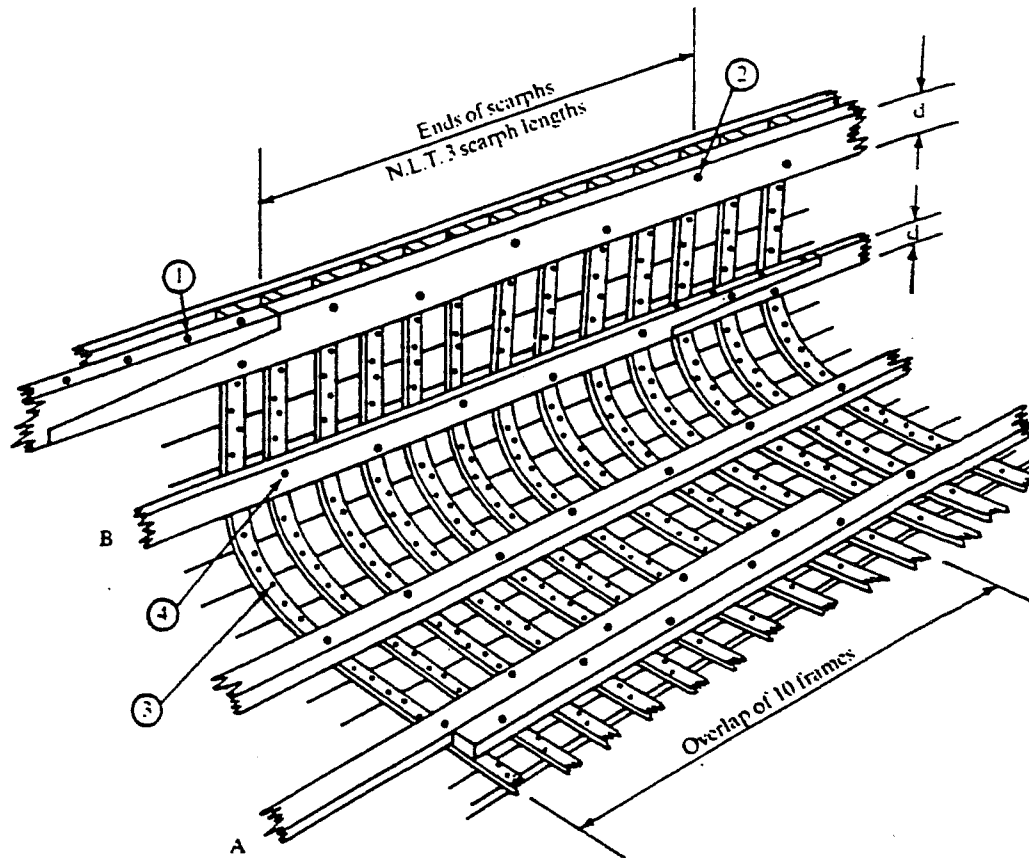


Figure M.11 TYPICAL MIDSHIP SECTION BILGE TYPE HULL

SCARPHING AND LAPPING OF LONGITUDINALS

Fig. M.12

VIEW INSIDE HULL



- Note:*  
 Beam shelf, keel assembly, floors etc., are not shown.  
 A: Laps in stringers not less than 10 frames.  
 B: Scarphs not less than  $6 \times 'd'$  in length.  
 1. Scarphs — min. of 4 edge bolt fastenings.  
 2. 'Reef' or stagger fastenings.  
 3. Nail fastenings in frames keeled.  
 4. Fasten stringers and clamps thro' alternate frames.

Figure M.12 SCARPHING AND LAPPING OF LONGITUDINALS

TYPICAL BUTT BLOCK IN HULL PLANK

Fig. M.13.

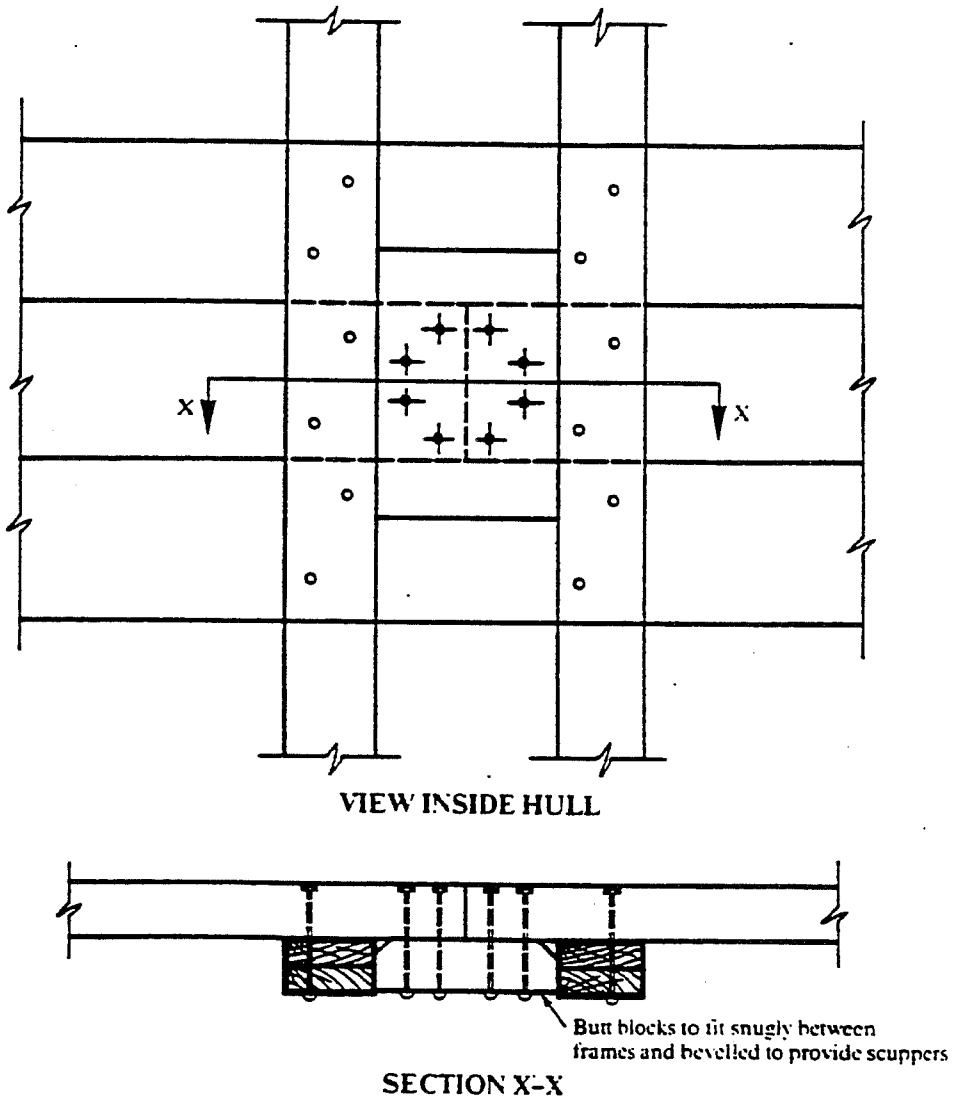


Figure M.13 TYPICAL BUTT BLOCK IN HULL PLANK